



# 9010

novantadieci

*architetture di luce*

90 10  
novantadieci



# I N D I C E



● 1089  
pag. 5



● 1090  
pag. 7



● 1091  
pag. 9



● 1092  
pag. 11



● 1093  
pag. 13



● 2369A  
pag. 14



● 2371A  
pag. 15



● 2402E  
pag. 16



● 2402F  
pag. 17



● 2402G  
pag. 18



● 2414B  
pag. 21



● 2415B  
pag. 22



● 2416A  
pag. 23



2623C  
pag. 24



2623D  
pag. 25



4039B  
pag. 26



4040B  
pag. 27



● 4044B  
pag. 28



● 4045B  
pag. 29



● 4154B  
pag. 30



● 4155B  
pag. 30



● 4218A  
pag. 33



● 5505B  
pag. 35



● 5505C  
pag. 35



● 5505D  
pag. 37



● 5505E  
pag. 37



5506  
pag. 38



8955  
pag. 41



M005  
pag. 42



M006  
pag. 43



● P007  
pag. 45



● P008  
pag. 47



● O21.790  
pag. 50



● O21.791  
pag. 50



● O21.792  
pag. 50

● = NEWS  
● = RESTYLING

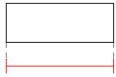


CONCRETE

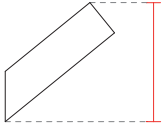
made in Italy

1089

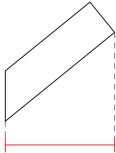
IP65



155



170



160



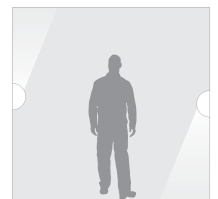
2 Kg



ARTICOLO

ARTICLE - ARTIKEL

Codice Code Code	Parte elettrica Electrical part Leuchtmittel	Potenza Power Leistung	Flusso luminoso Light output Lumen	Temp. colore Color temp. Farbtemp.	CRI CRI CRI	Tensione Tension Spannung	Frequenza Frequency Frequenz	Prezzo Price Preis
1089.369.L56.CT	LED	10W	750lm	3000°K	80	170-265V	50/60Hz	€180,00



Misure espresse in mm, tolleranza +/- 1-2 mm. L'azienda si riserva la facoltà di apportare variazioni di dati caratteristici, materiali, design, stili, tonalità, senza alcun preavviso.  
Measures in mm, tolerance +/- 1/2 mm. The company reserves the right to carry out variations to technical details, materials, design, style, colors with no previous notice.  
Die Masse sind in mm, mit einer Toleranz von +/- 1-2 mm ausgedrückt. Die Firma behält sich das Recht vor ohne Voranmeldung Änderungen an den Werkstoffen, am Design, am Stil und an der Färbung vorzunehmen.



CONCRETE

made in Italy

1090

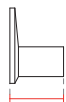
IP65



335



165



120



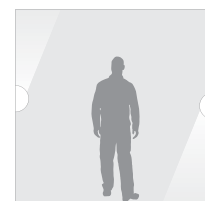
3.7 Kg



#### ARTICOLO

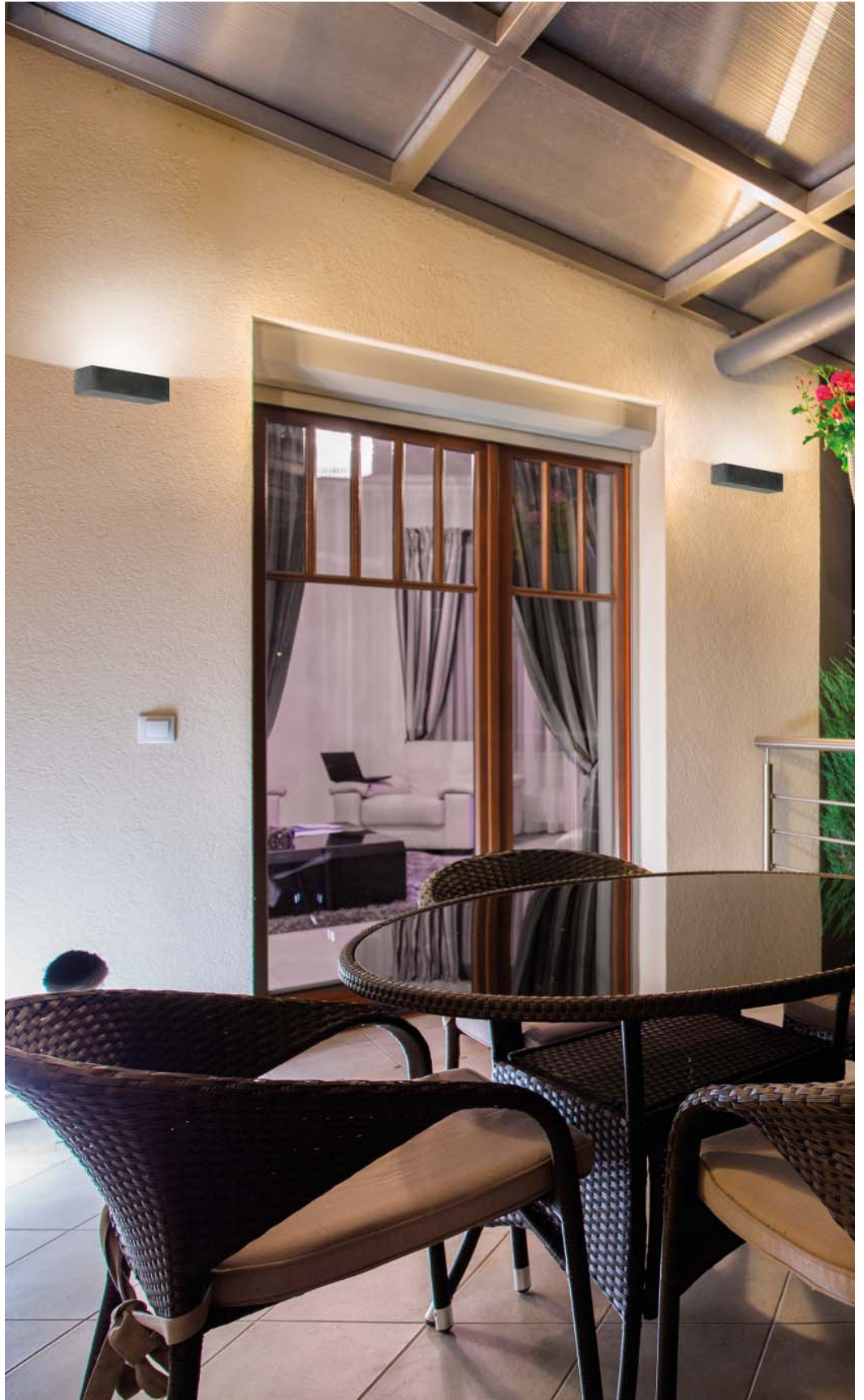
ARTICLE - ARTIKEL

Codice Code Code	Parte elettrica Electrical part Leuchtmittel	Potenza Power Leistung	Flusso luminoso Light output Lumen	Temp. colore Color temp. Farbtemp.	CRI CRI CRI	Tensione Tension Spannung	Frequenza Frequency Frequenz	Prezzo Price Preis
1090.369.L57.CT	LED	10W	800lm	3000°K	80	170-265V	50/60Hz	€ 210,00



Misure espresse in mm, tolleranza +/- 1-2 mm. L'azienda si riserva la facoltà di apportare variazioni di dati caratteristici, materiali, design, stili, tonalità, senza alcun preavviso.  
Measures in mm, tolerance +/- 1/2 mm. The company reserves the right to carry out variations to technical details, materials, design, style, colors with no previous notice.  
Die Masse sind in mm, mit einer Tolleranz von +/- 1-2 mm ausgedrückt, Die Firma behält sich das Recht vor ohne Voranmeldung Änderungen an den Werkstoffen, am Design, am Stil und an der Färbung vorzunehmen.



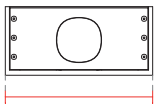


CONCRETE

made in Italy

1091

IP65



230



65



110



2.15 Kg

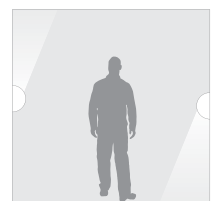


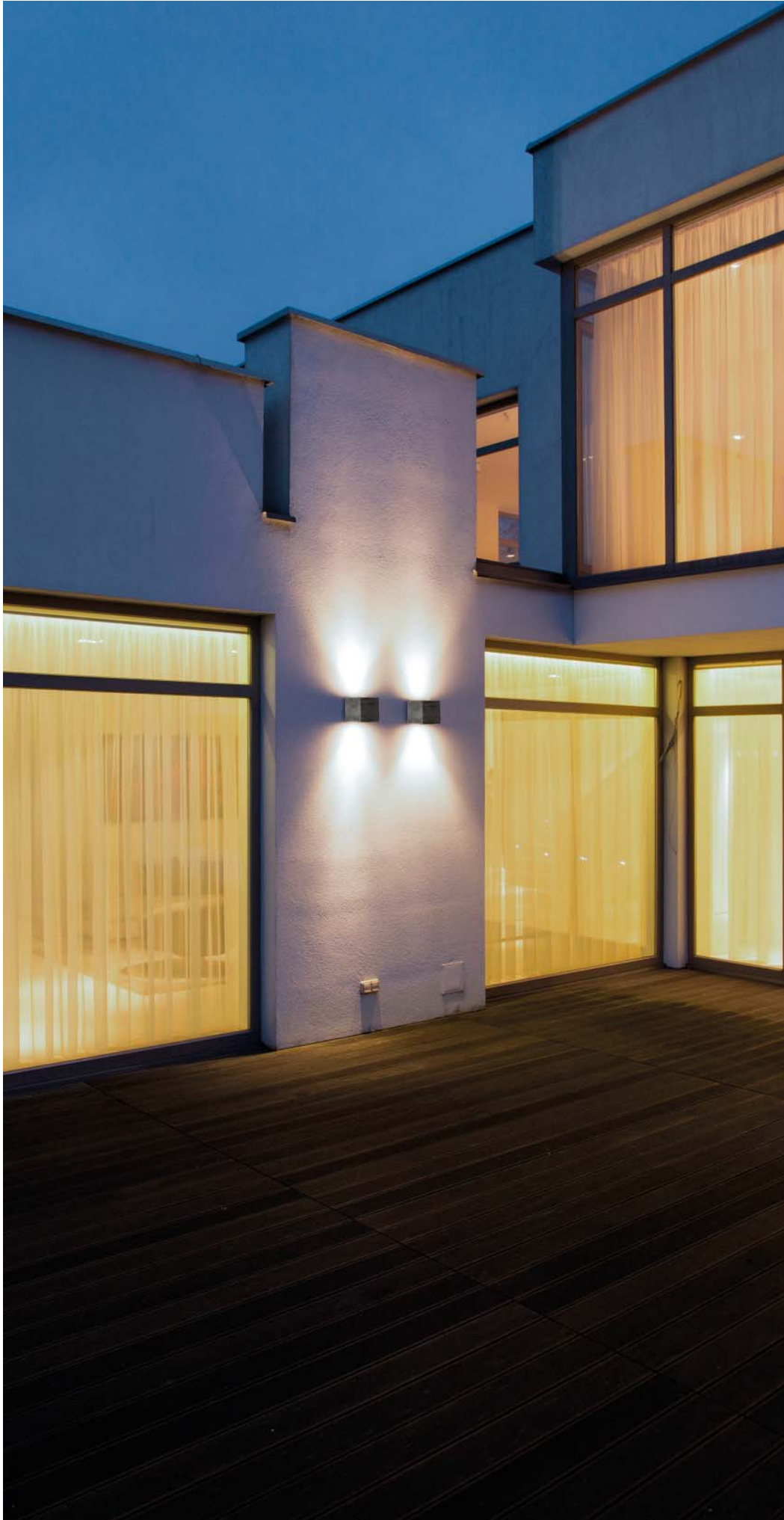
F CE  $\perp$  IP65

ARTICOLO

ARTICLE - ARTIKEL

Codice Code Code	Parte elettrica Electrical part Leuchtmittel	Potenza Power Leistung	Flusso luminoso Light output Lumen	Temp. colore Color temp. Farbtemp.	CRI CRI CRI	Tensione Tension Spannung	Frequenza Frequency Frequenz	Prezzo Price Preis
1091.369.L57.CT	LED	10W	800lm	3000°K	80	170-265V	50/60Hz	€200,00





CONCRETE

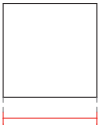
made in Italy

1092

IP65



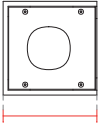
INCL.



150



150



150



3.2 Kg



F CE  $\perp$  IP65

ARTICOLO

ARTICLE - ARTIKEL

Codice Code Code	Parte elettrica Electrical part Leuchtmittel	Potenza Power Leistung	Flusso luminoso Light output Lumen	Temp. colore Color temp. Farbtemp.	CRI CRI CRI	Tensione Tension Spannung	Frequenza Frequency Frequenz	Prezzo Price Preis
1092.369.2L57.CT	LED	20W	1600lm	3000°K	80	170-265V	50/60Hz	€ 240,00



Misure espresse in mm, tolleranza +/- 1-2 mm. L'azienda si riserva la facoltà di apportare variazioni di dati caratteristici, materiali, design, stili, tonalità, senza alcun preavviso.  
Measures in mm, tolerance +/- 1/2 mm. The company reserves the right to carry out variations to technical details, materials, design, style, colors with no previous notice.  
Die Masse sind in mm, mit einer Tolleranz von +/- 1-2 mm ausgedrückt. Die Firma behält sich das Recht vor ohne Voranmeldung Änderungen an den Werkstoffen, am Design, am Stil und an der Färbung vorzunehmen.

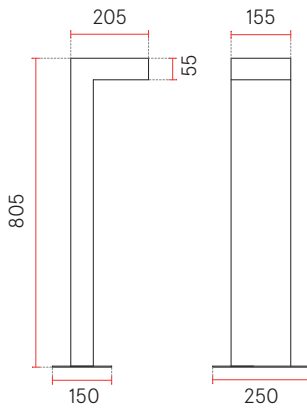


CONCRETE

made in Italy

1093

IP65



17.7 Kg



#### ARTICOLO

ARTICLE - ARTIKEL

Codice Code Code	Parte elettrica Electrical part Leuchtmittel	Potenza Power Leistung	Flusso luminoso Light output Lumen	Temp. colore Color temp. Farbtemp.	CRI CRI CRI	Tensione Tension Spannung	Frequenza Frequency Frequenz	Prezzo Price Preis
1093.369.L56.CT	LED	10W	750lm	3000°K	80	170-265V	50/60Hz	€ 325,00



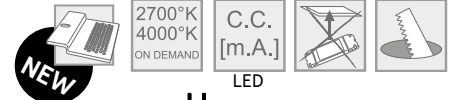
Misure espresse in mm, tolleranza +/- 1-2 mm. L'azienda si riserva la facoltà di apportare variazioni di dati caratteristici, materiali, design, stili, tonalità, senza alcun preavviso.  
Measures in mm, tolerance +/- 1/2 mm. The company reserves the right to carry out variations to technical details, materials, design, style, colors with no previous notice.  
Die Masse sind in mm, mit einer Tolleranz von +/- 1-2 mm ausgedrückt, Die Firma behält sich das Recht vor ohne Voranmeldung Änderungen an den Werkstoffen, am Design, am Stil und an der Färbung vorzunehmen.

# 2369A

new version of 2369

made in Italy

CRISTALY



	65
	355 x 305
	350 x 300
	300 x 240
	85
	60
	3 Kg

LED 7/13W  
compatibile  
con GU4 Ø35mm  
LED 7/13W is compatible  
with GU4 Ø35mm  
LED 7/13W ist mit GU4  
Ø35mm vereinbar

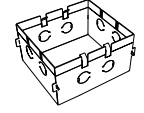
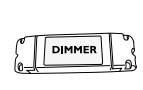
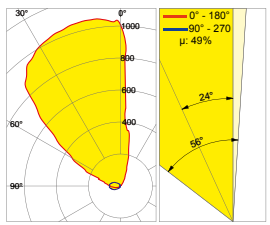
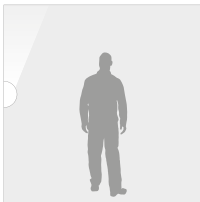


ARTICOLO ARTICLE - ARTIKEL									
Codice Code Code	Parte elettrica Electrical part Leuchtmittel	Potenza Power Leistung	Corrente Current Strom	Tensione Tension Spannung	Flusso luminoso Light output Lumen	Temp. colore Color temp. Farbtemp.	CRI CRI CRI	Prezzo Price Preis	
2369A004.L46.CT	GU4 Ø35	MAX 5W	/	12 V	/	/	/	€ 160,00	
2369A004.L46.CT	LED	7W	200mA	/	1000lm	3000°K	85	€ 205,00	
2369A004.L47.CT	LED	13W	350mA	/	1600lm	3000°K	85	€ 225,00	

ALIMENTATORI POWER SUPPLIES - BETRIEBSGERÄTE				
Per articolo For article Für Artikel	Codice Code Code	Potenza Power Leistung	Faretti collegabili Spotlight connections Anschliessbare Strahler	Prezzo Price Preis
2369A004.L46.CT	026.218	8W	1	€ 27,00
2369A004.L47.CT	026.171	18.9W	1	€ 36,00
	026.174	40W	2-3	€ 77,50

Rendimento luminoso  
raddoppiato  
Doubled light output  
Doppelte Lichtleistung

Accessori - Accessories - Zubehörteile



DIMMER  
pag. 53

per muratura/for brickwork  
023.476  
pag. 52

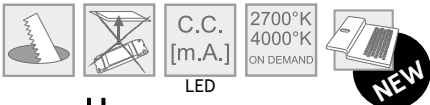
Misure espresse in mm, tolleranza +/- 1-2 mm. L'azienda si riserva la facoltà di apportare variazioni di dati caratteristici, materiali, design, stili, tonalità, senza alcun preavviso.  
Measures in mm, tolerance +/- 1/2 mm. The company reserves the right to carry out variations to technical details, materials, design, style, colors with no previous notice.  
Die Masse sind in mm, mit einer Toleranz von +/- 1-2 mm ausgedrückt. Die Firma behält sich das Recht vor ohne Voranmeldung Änderungen an den Werkstoffen, am Design, am Stil und an der Färbung vorzunehmen.

CRISTALY

made in Italy

2371A

new version of 2371



	65
	355 x 305
	350 x 300
	300 x 240
	85
	60
	3 Kg



LED 7/13W  
compatibile  
con GU4 Ø35mm  
LED 7/13W is compatible  
with GU4 Ø35mm  
LED 7/13W ist mit GU4  
Ø35mm vereinbar

F CE III IP20

ARTICOLO

ARTICLE - ARTIKEL

Codice Code Code	Parte elettrica Electrical part Leuchtmittel	Potenza Power Leistung	Corrente Current Strom	Tensione Tension Spannung	Flusso luminoso Light output Lumen	Temp. colore Color temp. Farbtemp.	CRI CRI CRI	Prezzo Price Preis
2371A004.94.CT	GU4 Ø35	MAX 5W	/	12 V	/	/	/	€ 160,00
2371A004.L46.CT	LED	7W	200mA	/	1000lm	3000°K	85	€ 205,00
2371A004.L47.CT	LED	13W	350mA	/	1600lm	3000°K	85	€ 225,00

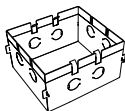
ALIMENTATORI

POWER SUPPLIES - BETRIEBSGERÄTE

Per articolo For article Für Artikel	Codice Code Code	Potenza Power Leistung	Faretti collegabili Spotlight connections Anschliessbare Strahler	Prezzo Price Preis
2371A004.L46.CT	026.218	8W	1	€ 27,00
2371A004.L47.CT	026.171	18.9W	1	€ 36,00
	026.174	40W	2-3	€ 77,50

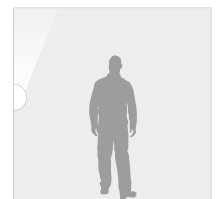
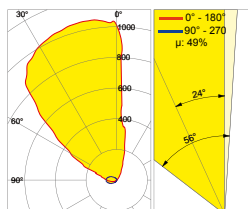
Rendimento luminoso  
raddoppiato  
Doubled light output  
Doppelte Lichtleistung

Accessori - Accessories - Zubehörteile



per muratura/for brickwork  
023.476  
pag. 52

DIMMER  
pag. 53



Misure espresse in mm, tolleranza +/- 1-2 mm. L'azienda si riserva la facoltà di apportare variazioni di dati caratteristici, materiali, design, stili, tonalità, senza alcun preavviso.  
Measures in mm, tolerance +/- 1/2 mm. The company reserves the right to carry out variations to technical details, materials, design, style, colors with no previous notice.  
Die Masse sind in mm, mit einer Toleranz von +/- 1-2 mm ausgedrückt. Die Firma behält sich das Recht vor ohne Voranmeldung Änderungen an den Werkstoffen, am Design, am Stil und an der Färbung vorzunehmen.

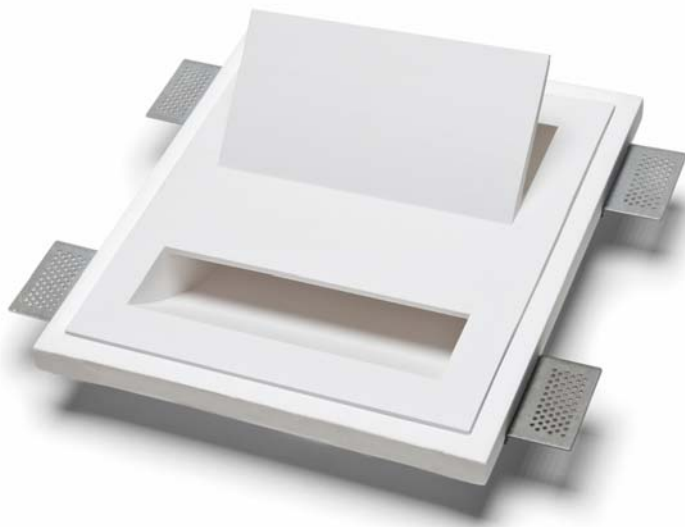
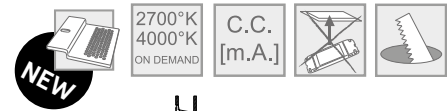


# 2402E

new version of 2402

made in Italy

CRISTALY



Installazione in 80 mm  
Installation in 80mm  
Installation in 80mm

	80
	320 x 320
	315 x 315
	220 x 100
	220 x 55
	65
	80
	4 Kg

IP20

## ARTICOLO

ARTICLE - ARTIKEL

Codice Code Code	Parte elettrica Electrical part Leuchtmittel	Potenza Power Leistung	Corrente Current Strom	Flusso luminoso Light output Lumen	Temp. colore Color temp. Farbtemp.	CRI CRI CRI	Prezzo Price Preis
2402E004.L91.CT	LED	16.5W	1050mA	2200lm	3000°K	85	€ 250,00

## ALIMENTATORI

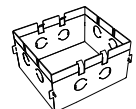
POWER SUPPLIES - BETRIEBSGERÄTE

Codice Code Code	Potenza Power Leistung	Faretti collegabili Spotlight connections Anschliessbare Strahler	Prezzo Price Preis
026.220	35W	1-2	€ 45,00
026.205	59.85W	2-3	€ 85,00

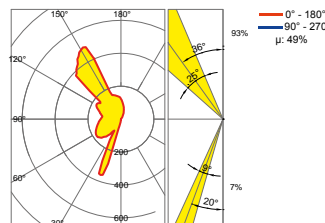
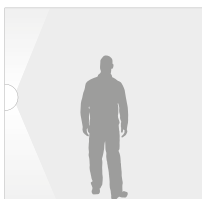
## Accessori - Accessories - Zubehörteile



DIMMER  
pag. 53



per muratura/for brickwork  
023.490  
pag. 52



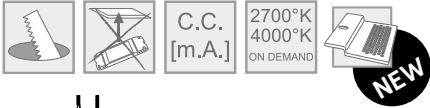
Misure espresse in mm, tolleranza +/- 1-2 mm. L'azienda si riserva la facoltà di apportare variazioni di dati caratteristici, materiali, design, stili, tonalità, senza alcun preavviso.  
Measures in mm, tolerance +/- 1/2 mm. The company reserves the right to carry out variations to technical details, materials, design, style, colors with no previous notice.  
Die Masse sind in mm, mit einer Toleranz von +/- 1-2 mm ausgedrückt. Die Firma behält sich das Recht vor ohne Voranmeldung Änderungen an den Werkstoffen, am Design, am Stil und an der Färbung vorzunehmen.

CRISTALY

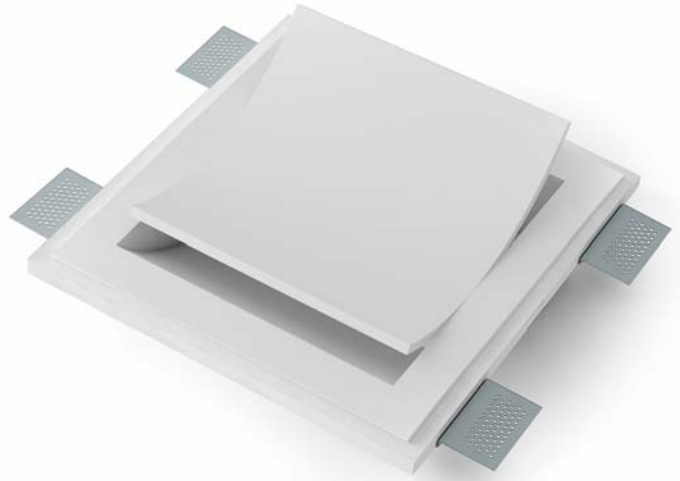
made in Italy

2402F

new version of 2402C



	80
	320 x 320
	315 x 315
	220 x 205
	220 x 55
	65
	80
	4 Kg



Installazione in 80 mm  
Installation in 80mm  
Installation in 80mm

F CE III IP20

ARTICOLO

ARTICLE - ARTIKEL

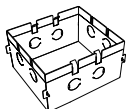
Codice Code Code	Parte elettrica Electrical part Leuchtmittel	Potenza Power Leistung	Corrente Current Strom	Flusso luminoso Light output Lumen	Temp. colore Color temp. Farbtemp.	CRI CRI CRI	Prezzo Price Preis
2402F004.L91.CT	LED	16.5W	1050mA	2200lm	3000°K	85	€ 250,00

ALIMENTATORI

POWER SUPPLIES - BETRIEBSGERÄTE

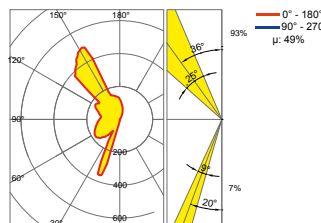
Codice Code Code	Potenza Power Leistung	Faretti collegabili Spotlight connections Anschliessbare Strahler	Prezzo Price Preis
026.220	35W	1-2	€ 45,00
026.205	59.85W	2-3	€ 85,00

Accessori - Accessories - Zubehörteile



per muratura/for brickwork  
023.490  
pag. 52

DIMMER  
pag. 53



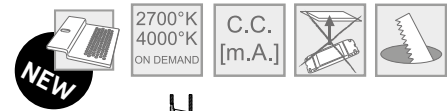
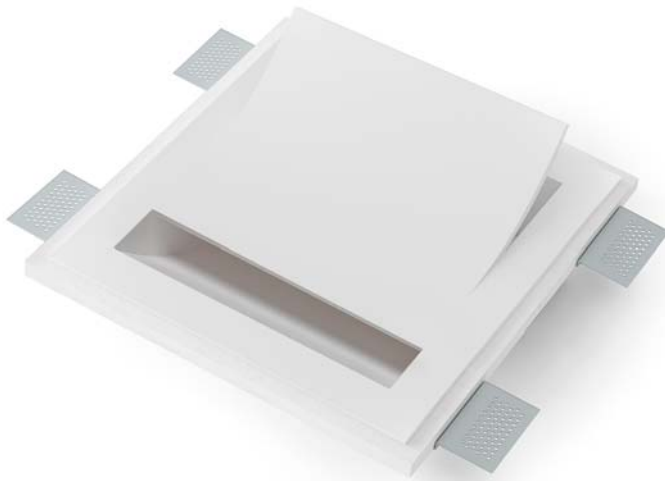
Misure espresse in mm, tolleranza +/- 1-2 mm. L'azienda si riserva la facoltà di apportare variazioni di dati caratteristici, materiali, design, stili, tonalità, senza alcun preavviso.  
Measures in mm, tolerance +/- 1/2 mm. The company reserves the right to carry out variations to technical details, materials, design, style, colors with no previous notice.  
Die Masse sind in mm, mit einer Toleranz von +/- 1-2 mm ausgedrückt. Die Firma behält sich das Recht vor ohne Voranmeldung Änderungen an den Werkstoffen, am Design, am Stil und an der Färbung vorzunehmen.

# 2402G

new version of 2402D

made in Italy

CRISTALY



	80
	320 x 320
	315 x 315
	220 x 120
	220 x 55
	65
	80
	4 Kg

Installazione in 80 mm  
Installation in 80mm  
Installation in 80mm

IP20 III CE F

## ARTICOLO

ARTICLE - ARTIKEL

Codice Code Code	Parte elettrica Electrical part Leuchtmittel	Potenza Power Leistung	Corrente Current Strom	Flusso luminoso Light output Lumen	Temp. colore Color temp. Farbtemp.	CRI CRI CRI	Prezzo Price Preis
2402G004.L91.CT	LED	16.5W	1050mA	2200lm	3000°K	85	€ 250,00

## ALIMENTATORI

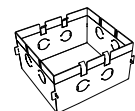
POWER SUPPLIES - BETRIEBSGERÄTE

Codice Code Code	Potenza Power Leistung	Faretti collegabili Spotlight connections Anschliessbare Strahler	Prezzo Price Preis
026.220	35W	1-2	€ 45,00
026.205	59.85W	2-3	€ 85,00

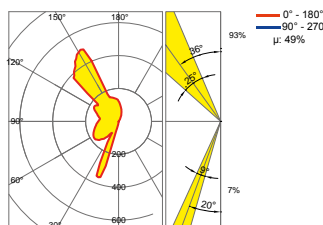
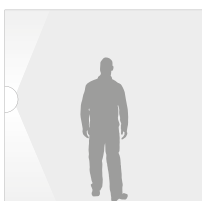
## Accessori - Accessories - Zubehörteile



DIMMER  
pag. 53



per muratura/for brickwork  
023.490  
pag. 52



Misure espresse in mm, tolleranza +/- 1-2 mm. L'azienda si riserva la facoltà di apportare variazioni di dati caratteristici, materiali, design, stili, tonalità, senza alcun preavviso.  
Measures in mm, tolerance +/- 1/2 mm. The company reserves the right to carry out variations to technical details, materials, design, style, colors with no previous notice.  
Die Masse sind in mm, mit einer Toleranz von +/- 1-2 mm ausgedrückt. Die Firma behält sich das Recht vor ohne Voranmeldung Änderungen an den Werkstoffen, am Design, am Stil und an der Färbung vorzunehmen.



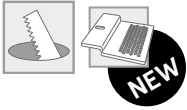


CRISTALY

made in Italy

2414B

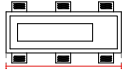
new version of 2414



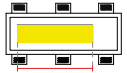
80



465 x 170



460 x 165



300 x 70



80



2.65 Kg



Installazione in 80 mm  
Installation in 80mm  
Installation in 80mm

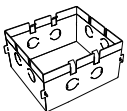
F CE IP20

ARTICOLO

ARTICLE - ARTIKEL

Codice Code Code	Parte elettrica Electrical part Leuchtmittel	Potenza Power Leistung	Tensione Tension Spannung	Frequenza Frequency Frequenz	Prezzo Price Preis
2414B004.35.CT	GU10 ø50	MAX 35W	240V	50/60Hz	€ 110,00

Accessori - Accessories - Zubehörteile



per muratura/for brickwork  
023.486  
pag. 52



L001/L004  
L002/L005  
pag. 52



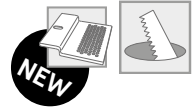
Misure espresse in mm, tolleranza +/- 1-2 mm. L'azienda si riserva la facoltà di apportare variazioni di dati caratteristici, materiali, design, stili, tonalità, senza alcun preavviso.  
Measures in mm, tolerance +/- 1/2 mm. The company reserves the right to carry out variations to technical details, materials, design, style, colors with no previous notice.  
Die Masse sind in mm, mit einer Tolleranz von +/- 1-2 mm ausgedrückt. Die Firma behält sich das Recht vor ohne Voranmeldung Änderungen an den Werkstoffen, am Design, am Stil und an der Färbung vorzunehmen.

# 2415B

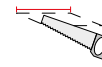
new version of 2415

made in Italy

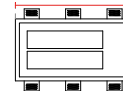
CRISTALY



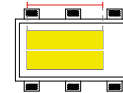
80



465 x 255



460 x 250



2x  
300 x 70





80



3.9 Kg



IP20   

## ARTICOLO

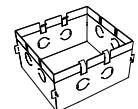
ARTICLE - ARTIKEL

Codice Code Code	Parte elettrica Electrical part Leuchtmittel	Potenza Power Leistung	Tensione Tension Spannung	Frequenza Frequency Frequenz	Prezzo Price Preis
2415B004.35.CT	GU10 ø50	MAX 2x35W	240V	50/60Hz	€ 138,00

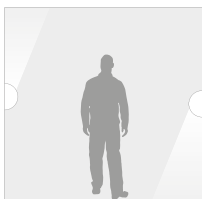
## Accessori - Accessories - Zubehörteile



L001/L004  
L002/L005  
pag. 52



per muratura/for brickwork  
023.487  
pag. 52



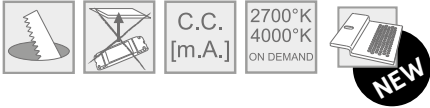
Misure espresse in mm, tolleranza +/- 1-2 mm. L'azienda si riserva la facoltà di apportare variazioni di dati caratteristici, materiali, design, stili, tonalità, senza alcun preavviso.  
Measures in mm, tolerance +/- 1/2 mm. The company reserves the right to carry out variations to technical details, materials, design, style, colors with no previous notice.  
Die Masse sind in mm, mit einer Toleranz von +/- 1-2 mm ausgedrückt. Die Firma behält sich das Recht vor ohne Voranmeldung Änderungen an den Werkstoffen, am Design, am Stil und an der Färbung vorzunehmen.

CRISTALY

made in Italy

2416A

new version of 2416



	80
	405 x 340
	400 x 335
	240 x 240
	80
	4.15 Kg



Installazione in 80 mm  
Installation in 80mm  
Installation in 80mm

F CE III IP20

ARTICOLO

ARTICLE - ARTIKEL

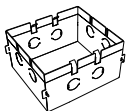
Codice Code Code	Parte elettrica Electrical part Leuchtmittel	Potenza Power Leistung	Corrente Current Strom	Flusso luminoso Light output Lumen	Temp. colore Color temp. Farbtemp.	CRI CRI CRI	Prezzo Price Preis
2416A004.L89.CT	LED	16.5W	1050mA	2200lm	3000°K	85	€ 250,00

ALIMENTATORI

POWER SUPPLIES - BETRIEBSGERÄTE

Codice Code Code	Potenza Power Leistung	Faretti collegabili Spotlight connections Anschliessbare Strahler	Prezzo Price Preis
026.220	35W	1-2	€ 45,00
026.205	59.85W	2-3	€ 85,00

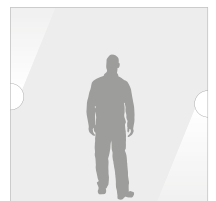
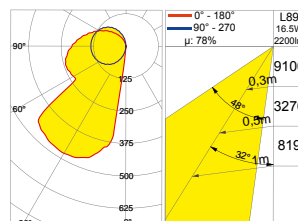
Accessori - Accessories - Zubehörteile



per muratura/for brickwork  
023.488  
pag. 52



DIMMER  
pag. 53



Misure espresse in mm, tolleranza +/- 1-2 mm. L'azienda si riserva la facoltà di apportare variazioni di dati caratteristici, materiali, design, stili, tonalità, senza alcun preavviso.  
Measures in mm, tolerance +/- 1/2 mm. The company reserves the right to carry out variations to technical details, materials, design, style, colors with no previous notice.  
Die Masse sind in mm, mit einer Toleranz von +/- 1-2 mm ausgedrückt. Die Firma behält sich das Recht vor ohne Voranmeldung Änderungen an den Werkstoffen, am Design, am Stil und an der Färbung vorzunehmen.

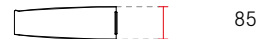


# 2623C

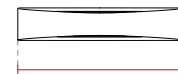
design by Itamar Harari

made in Italy

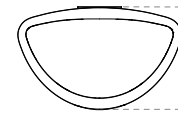
CRISTALY



85



430



250



2.9 Kg



IP20   

## ARTICOLO

ARTICLE - ARTIKEL

Codice Code Code	Parte elettrica Electrical part Leuchtmittel	Potenza Power Leistung	Flusso luminoso Light output Lumen	Temp. colore Color temp. Farbtemp.	CRI CRI CRI	Tensione Tension Spannung	Frequenza Frequency Frequenz	Prezzo Price Preis
2623C004.L93.CT	LED	2x6.5W	1800lm	3000°K	85	220-240V	50/60Hz	€ 235,00

## VERSIONE DIMMERABILE (ALIMENTATORE DA ORDINARE SEPARATAMENTE)\*

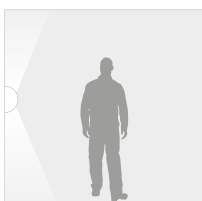
Dimmable version (power supply to be ordered separately)\* - Dimmbare Version (Dimmbare Driver separat bestellen) \*

Articolo Article Artikel	Potenza Power Leistung	Corrente Current Strom	Prezzo Price Preis	Alimentatori Power supplies Betriebsgeräte	Potenza Power Leistung	Tipo Type Type	Articoli collegabili Article connections Anschliessbare Artikel	Prezzo Price Preis
2623C004.L93D.CT	2x6.5W	350mA	€ 200,00	026.219	16.1W	PUSH - 0-10V - DALI	1	€ 80,00
				026.185	35W	PUSH - DALI	1-2	€ 129,50
				026.187	35W	0-10V	1-2	€ 115,00

\* = L' alimentatore dimmerabile non può essere inserito nell'appliche ma deve essere installato in una scatola di derivazione remota

The dimmable driver shall not be installed in the wall lamp, but on a remote box

Der dimmbare Treiber soll nicht in der Wandleuchte installiert werden, sondern auf einem Schalkasten



Misure espresse in mm, tolleranza +/- 1-2 mm. L'azienda si riserva la facoltà di apportare variazioni di dati caratteristici, materiali, design, stili, tonalità, senza alcun preavviso.  
Measures in mm, tolerance +/- 1/2 mm. The company reserves the right to carry out variations to technical details, materials, design, style, colors with no previous notice.  
Die Masse sind in mm, mit einer Toleranz von +/- 1-2 mm ausgedrückt. Die Firma behält sich das Recht vor ohne Voranmeldung Änderungen an den Werkstoffen, am Design, am Stil und an der Färbung vorzunehmen.

**CRISTALY**

made in Italy

**2623D**

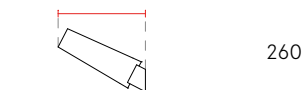
design by Itamar Harari



180



430



260



2.9 Kg

**ARTICOLO**

ARTICLE - ARTIKEL

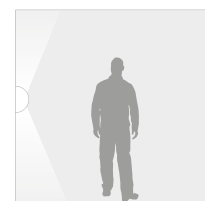
Code Code Code	Parte elettrica Electrical part Leuchtmittel	Potenza Power Leistung	Flusso luminoso Light output Lumen	Temp. colore Color temp. Farbtemp.	CRI CRI CRI	Tensione Tension Spannung	Frequenza Frequency Frequenz	Prezzo Price Preis
2623D004.L93.CT	LED	2x6.5W	1800lm	3000°K	85	220-240V	50/60Hz	€ 235,00

**VERSIONE DIMMERABILE (ALIMENTATORE DA ORDINARE SEPARATAMENTE)\***

Dimmable version (power supply to be ordered separately)\* - Dimmbare Version (Dimmbare Driver separat bestellen) \*

Articolo Article Artikel	Potenza Power Leistung	Corrente Current Strom	Prezzo Price Preis	Alimentatori Power supplies Betriebsgeräte	Potenza Power Leistung	Tipo Type Type	Articoli collegabili Article connections Anschliessbare Artikel	Prezzo Price Preis
2623D004.L93D.CT	2x6.5W	350mA	€ 200,00	026.219	16.1W	PUSH - 0-10V - DALI	1	€ 80,00
				026.185	35W	PUSH - DALI	1-2	€ 129,50
				026.187	35W	0-10V	1-2	€ 115,00

\* = L' alimentatore dimmerabile non può essere inserito nell'applicque ma deve essere installato in una scatola di derivazione remota  
 The dimmable driver shall not be installed in the wall lamp, but on a remote box  
 Der dimmbare Treiber soll nicht in der Wandleuchte installiert werden, sondern auf einem Schalkasten

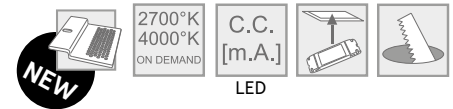


Misure espresse in mm, tolleranza +/- 1-2 mm. L'azienda si riserva la facoltà di apportare variazioni di dati caratteristici, materiali, design, stili, tonalità, senza alcun preavviso.  
 Measures in mm, tolerance +/- 1/2 mm. The company reserves the right to carry out variations to technical details, materials, design, style, colors with no previous notice.  
 Die Masse sind in mm, mit einer Tolleranz von +/- 1-2 mm ausgedrückt. Die Firma behält sich das Recht vor ohne Voranmeldung Änderungen an den Werkstoffen, am Design, am Stil und an der Färbung vorzunehmen.

# 4039B

made in Italy

CRISTALY



Lampadina orientabile di 30°  
Adjustable spotlight 30°  
Schwenkbares Leuchtmittel 30°



\* = Altezza incluso lampadina OSRAM H55 mm e portalamadina  
Height including OSRAM H55 mm lamp and lampholder  
Höhe inkl. OSRAM H55 mm Lampe und Fassung

## ARTICOLO

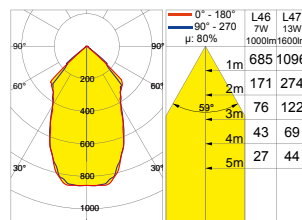
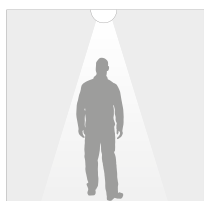
ARTICLE - ARTIKEL

Codice Code Code	Parte elettrica Electrical part Leuchtmittel	Potenza Power Leistung	Corrente Current Strom	Tensione Tension Spannung	Flusso luminoso Light output Lumen	Temp. colore Color temp. Farbtemp.	CRI CRI CRI	Prezzo Price Preis
4039B004.92.CT	G53 (QR111)	MAX 50W	/	12V	/	/	/	€ 83,00
4039B004.L46.CT	LED	7W	200mA	/	1000lm	3000°K	85	€ 147,00
4039B004.L47.CT	LED	13W	350mA	/	1600lm	3000°K	85	€ 170,00

## ALIMENTATORI

POWER SUPPLIES - BETRIEBSGERÄTE

Per articolo For article Für Artikel	Codice Code Code	Potenza Power Leistung	Faretti collegabili Spotlight connec- tions Anschliessbare Strahler	Prezzo Price Preis
4039B004.L46.CT	026.218	8W	1	€ 27,00
4039B004.L47.CT	026.171	18.9W	1	€ 36,00
	026.174	40W	2-3	€ 77,50



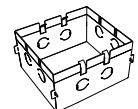
## Accessori - Accessories - Zubehörteile



L003/L006  
pag. 52



DIMMER  
pag. 53



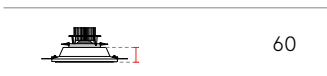
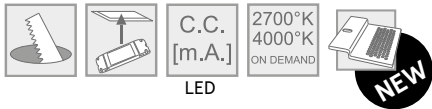
per muratura/for brickwork  
023.475  
pag. 52

Misure espresse in mm, tolleranza +/- 1-2 mm. L'azienda si riserva la facoltà di apportare variazioni di dati caratteristici, materiali, design, stili, tonalità, senza alcun preavviso.  
Measures in mm, tolerance +/- 1/2 mm. The company reserves the right to carry out variations to technical details, materials, design, style, colors with no previous notice.  
Die Masse sind in mm, mit einer Toleranz von +/- 1-2 mm ausgedrückt. Die Firma behält sich das Recht vor ohne Voranmeldung Änderungen an den Werkstoffen, am Design, am Stil und an der Färbung vorzunehmen.

CRISTALY

made in Italy

4040B



Lampadina orientabile di 30°  
Adjustable spotlight 30°  
Schwenkbare Leuchtmittel 30°



\* = Altezza incluso lampadina OSRAM H55 mm e portalampada  
Height including OSRAM H55 mm lamp and lampholder  
Höhe inkl. OSRAM H55 mm Lampe und Fassung

ARTICOLO

ARTICLE - ARTIKEL

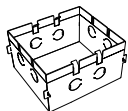
Code Code Code	Parte elettrica Electrical part Leuchtmittel	Potenza Power Leistung	Corrente Current Strom	Tensione Tension Spannung	Flusso luminoso Light output Lumen	Temp. colore Color temp. Farbtemp.	CRI CRI CRI	Prezzo Price Preis
4040B004.92.CT	G53 (QR111)	MAX 50W	/	12V	/	/	/	€ 83,00
4040B004.L46.CT	LED	7W	200mA	/	1000lm	3000°K	85	€ 147,00
4040B004.L47.CT	LED	13W	350mA	/	1600lm	3000°K	85	€ 170,00

ALIMENTATORI

POWER SUPPLIES - BETRIEBSGERÄTE

Per articolo For article Für Artikel	Codice Code Code	Potenza Power Leistung	Faretti collegabili Spotlight connections Anschliessbare Strahler	Prezzo Price Preis
4040B004.L46.CT	026.218	8W	1	€ 27,00
4040B004.L47.CT	026.171	18.9W	1	€ 36,00
	026.174	40W	2-3	€ 77,50

Accessori - Accessories - Zubehörteile



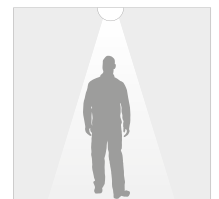
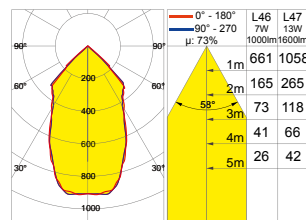
per muratura/for brickwork  
023.475  
pag. 52



DIMMER  
pag. 53



L003/L006  
pag. 52

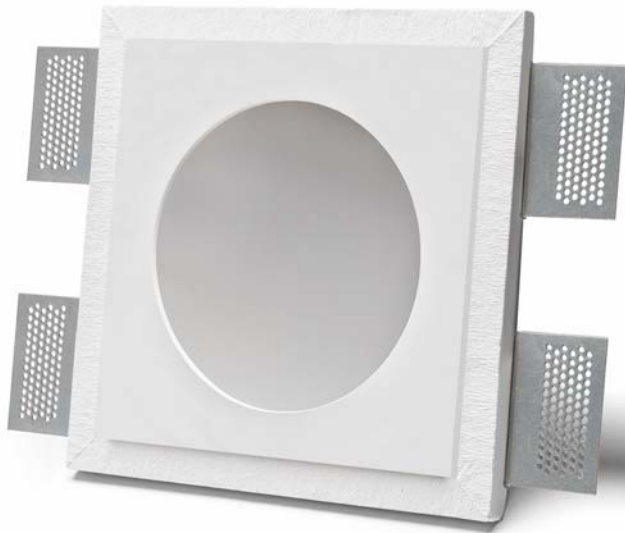


Misure espresse in mm, tolleranza +/- 1-2 mm. L'azienda si riserva la facoltà di apportare variazioni di dati caratteristici, materiali, design, stili, tonalità, senza alcun preavviso.  
Measures in mm, tolerance +/- 1/2 mm. The company reserves the right to carry out variations to technical details, materials, design, style, colors with no previous notice.  
Die Masse sind in mm, mit einer Toleranz von +/- 1-2 mm ausgedrückt. Die Firma behält sich das Recht vor ohne Voranmeldung Änderungen an den Werkstoffen, am Design, am Stil und an der Färbung vorzunehmen.

# 4044B

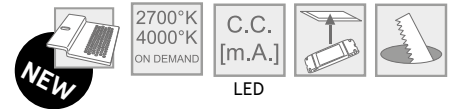
new version of 4044

IP44



made in Italy

CRISTALY



	105
	205 x 205
	200 x 200
	Ø130
	50
	G53=100* LED=100
	1.8 Kg

IP20/IP44

\* = Altezza incluso lampadina OSRAM H55 mm e portalamadina  
Height including OSRAM H55 mm lamp and lampholder  
Höhe inkl. OSRAM H55 mm Lampe und Fassung

## ARTICOLO

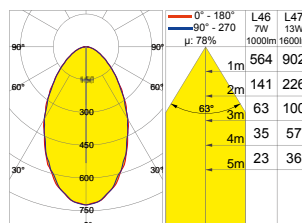
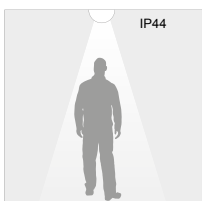
ARTICLE - ARTIKEL

Codice Code Code	Parte elettrica Electrical part Leuchtmittel	Potenza Power Leistung	Corrente Current Strom	Tensione Tension Spannung	Flusso luminoso Light output Lumen	Temp. colore Color temp. Farbtemp.	CRI CRI CRI	Prezzo Price Preis
4044B004.92.CT	G53 (QR111)	MAX 20W	/	12V	/	/	/	€ 83,00
4044B004.L46.CT	LED	7W	200mA	/	1000lm	3000°K	85	€ 147,00
4044B004.L47.CT	LED	13W	350mA	/	1600lm	3000°K	85	€ 170,00

## ALIMENTATORI

POWER SUPPLIES - BETRIEBSGERÄTE

Per articolo For article Für Artikel	Codice Code Code	Potenza Power Leistung	Faretti collegabili Spotlight connections Anschliessbare Strahler	Prezzo Price Preis
4044B004.L46.CT	026.218	8W	1	€ 27,00
4044B004.L47.CT	026.171	18.9W	1	€ 36,00
	026.174	40W	2-3	€ 77,50



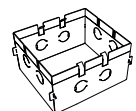
## Accessori - Accessories - Zubehörteile



L003/L006  
pag. 52



DIMMER  
pag. 53



per muratura/for brickwork  
023.447  
pag. 52

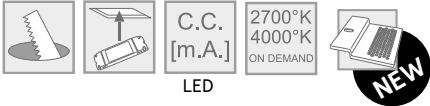
Misure espresse in mm, tolleranza +/- 1-2 mm. L'azienda si riserva la facoltà di apportare variazioni di dati caratteristici, materiali, design, stili, tonalità, senza alcun preavviso.  
Measures in mm, tolerance +/- 1/2 mm. The company reserves the right to carry out variations to technical details, materials, design, style, colors with no previous notice.  
Die Masse sind in mm, mit einer Toleranz von +/- 1-2 mm ausgedrückt. Die Firma behält sich das Recht vor ohne Voranmeldung Änderungen an den Werkstoffen, am Design, am Stil und an der Färbung vorzunehmen.

CRISTALY

made in Italy

4045B

new version of 4045



LED

	170
	255 x 255
	252 x 252
	155 x 155
	114
	G53=165* LED=165
	2.55 Kg



F CE III IP20

\* = Altezza incluso lampadina OSRAM H55 mm e portalampada  
Height including OSRAM H55 mm lamp and lampholder  
Höhe inkl. OSRAM H55 mm Lampe und Fassung

ARTICOLO

ARTICLE - ARTIKEL

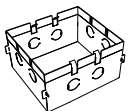
Codice Code Code	Parte elettrica Electrical part Leuchtmittel	Potenza Power Leistung	Corrente Current Strom	Tensione Tension Spannung	Flusso luminoso Light output Lumen	Temp. colore Color temp. Farbtemp.	CRI CRI CRI	Prezzo Price Preis
4045B004.92.CT	G53 (QR111)	MAX 20W	/	12V	/	/	/	€ 90,00
4045B004.L46.CT	LED	7W	200mA	/	1000lm	3000°K	85	€ 155,00
4045B004.L47.CT	LED	13W	350mA	/	1600lm	3000°K	85	€ 180,00

ALIMENTATORI

POWER SUPPLIES - BETRIEBSGERÄTE

Per articolo For article Für Artikel	Codice Code Code	Potenza Power Leistung	Faretti collegabili Spotlights connections Anschliessbare Strahler	Prezzo Price Preis
4045B004.L46.CT	026.218	8W	1	€ 27,00
4045B004.L47.CT	026.171	18.9W	1	€ 36,00
	026.174	40W	2-3	€ 77,50

Accessori - Accessories - Zubehörteile



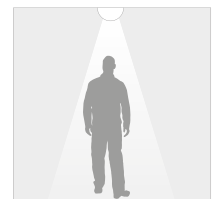
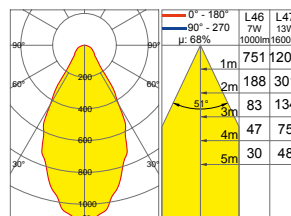
per muratura/for brickwork  
023.477  
pag. 52



DIMMER  
pag. 53



L003/L006  
pag. 52



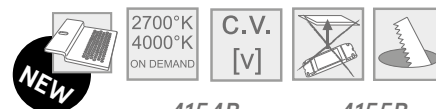
Misure espresse in mm, tolleranza +/- 1-2 mm. L'azienda si riserva la facoltà di apportare variazioni di dati caratteristici, materiali, design, stili, tonalità, senza alcun preavviso.  
Measures in mm, tolerance +/- 1/2 mm. The company reserves the right to carry out variations to technical details, materials, design, style, colors with no previous notice.  
Die Masse sind in mm, mit einer Toleranz von +/- 1-2 mm ausgedrückt. Die Firma behält sich das Recht vor ohne Voranmeldung Änderungen an den Werkstoffen, am Design, am Stil und an der Färbung vorzunehmen.

# 4154B - 4155B

new version of 4154-4155

made in Italy

CRISTALY



	4154B	4155B
	50	50
	140 x 140	200 x 140
	135 x 135	195 x 135
	55 x 40	105 x 40
	40	40
	0.65 Kg	0.95 Kg

IP20

Con schermo trasparente (opalino su richiesta)  
Transparent plastic cover included (opal cover available on demand)  
Transparente Abdeckung eingeschlossen (Abdeckung in Kunststoff opal verfügbar auf Anfrage)

## ARTICOLO

ARTICLE - ARTIKEL

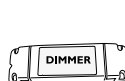
Codice Code Code	Parte elettrica Electrical part Leuchtmittel	Potenza Power Leistung	Tensione Tension Spannung	Flusso luminoso Light output Lumen	Temp. colore Color temp. Farbtemp.	CRI CRI CRI	Prezzo Price Preis
<b>4154B</b>							
4154B004.L22.CT	LED	1.1W	24Vdc	100lm	3000°K	85	€ 73,00
<b>4155B</b>							
4155B004.L22.CT	LED	2.2W	24Vdc	200lm	3000°K	85	€ 93,50

## ALIMENTATORI

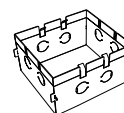
POWER SUPPLIES - BETRIEBSGERÄTE

Per articolo For article Für Artikel	Codice Code Code	Potenza Power Leistung	Faretti collegabili Spotlight connections Anschliessbare Strahler	Prezzo Price Preis
4154B004.L22.CT	026.155	19.2W	1-16	€ 36,00
	026.175	36W	1-30	€ 49,00
	026.153	60W	1-52	€ 55,00
4155B004.L22.CT	026.155	19.2W	1-8	€ 36,00
	026.175	36W	1-15	€ 49,00
	026.153	60W	1-26	€ 55,00

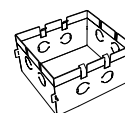
## Accessori - Accessories - Zubehörteile



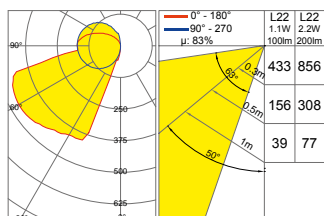
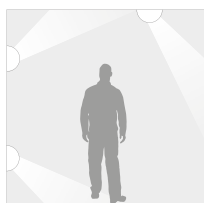
DIMMER  
pag. 53



per muratura/for brickwork  
4154B =023.478  
pag. 52



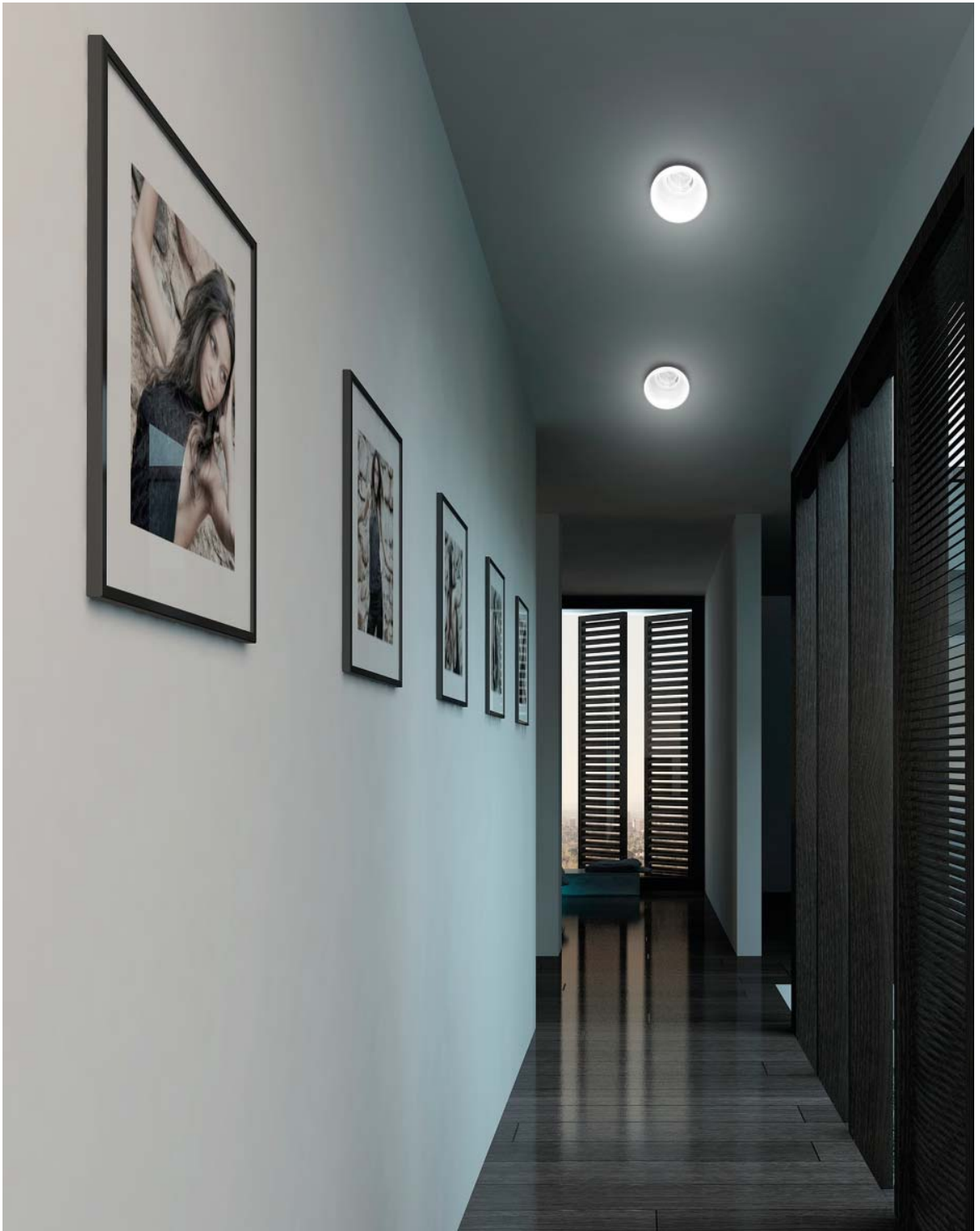
per muratura/for brickwork  
4155B =023.452  
pag. 52



Misure espresse in mm, tolleranza +/- 1-2 mm. L'azienda si riserva la facoltà di apportare variazioni di dati caratteristici, materiali, design, stili, tonalità, senza alcun preavviso.  
Measures in mm, tolerance +/- 1/2 mm. The company reserves the right to carry out variations to technical details, materials, design, style, colors with no previous notice.  
Die Masse sind in mm, mit einer Toleranz von +/- 1-2 mm ausgedrückt. Die Firma behält sich das Recht vor ohne Voranmeldung Änderungen an den Werkstoffen, am Design, am Stil und an der Färbung vorzunehmen.



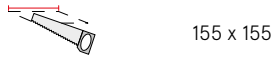
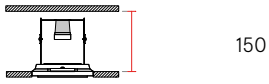
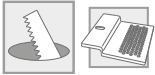




CRISTALY

made in Italy

4218A

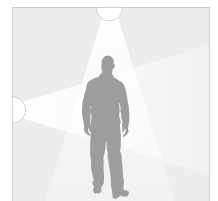


IP 20

ARTICOLO

ARTICLE - ARTIKEL

Code Code Code	Parte elettrica Electrical part Leuchtmittel	Potenza Power Leistung	Tensione Tension Spannung	Frequenza Frequency Frequenz	Prezzo Price Preis
4218A004.39.CT	E27	MAX 20W	240V	50/60Hz	€ 82,00



Misure espresse in mm, tolleranza +/- 1-2 mm. L'azienda si riserva la facoltà di apportare variazioni di dati caratteristici, materiali, design, stili, tonalità, senza alcun preavviso.  
Measures in mm, tolerance +/- 1/2 mm. The company reserves the right to carry out variations to technical details, materials, design, style, colors with no previous notice.  
Die Masse sind in mm, mit einer Toleranz von +/- 1-2 mm ausgedrückt. Die Firma behält sich das Recht vor ohne Voranmeldung Änderungen an den Werkstoffen, am Design, am Stil und an der Färbung vorzunehmen.



CRISTALY

made in Italy



5505B

5505C

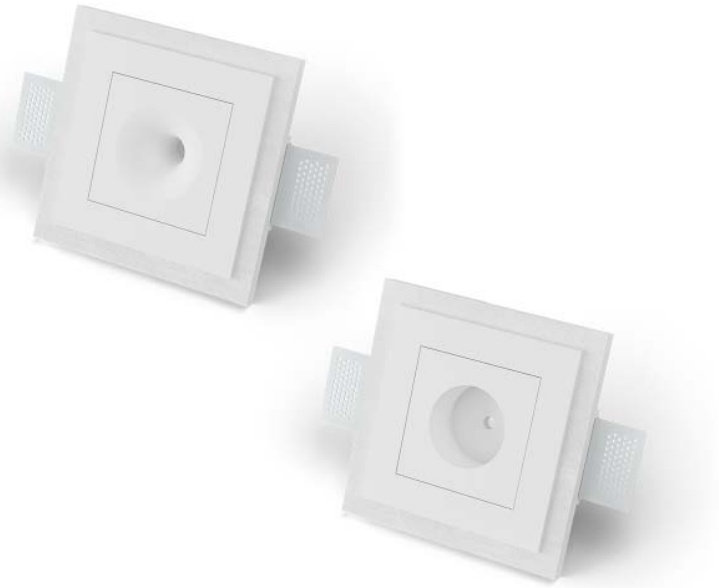
	80		70
	185 x 185		185 x 185
	180 x 180		180 x 180
	Ø70		Ø60
	63		50
	1.1 Kg		1.15 Kg

# 5505B - 5505C

Accessorio per sospensioni

Accessory for suspension lamps

Zubehör für Pendelleuchten



IP20

## ARTICOLO

ARTICLE - ARTIKEL

Codice Code Code	Prezzo Price Preis
5505B004.00.CT	€ 75,00
5505C004.00.CT	€ 75,00

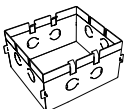


5505B



5505C

Accessori - Accessories - Zubehörteile

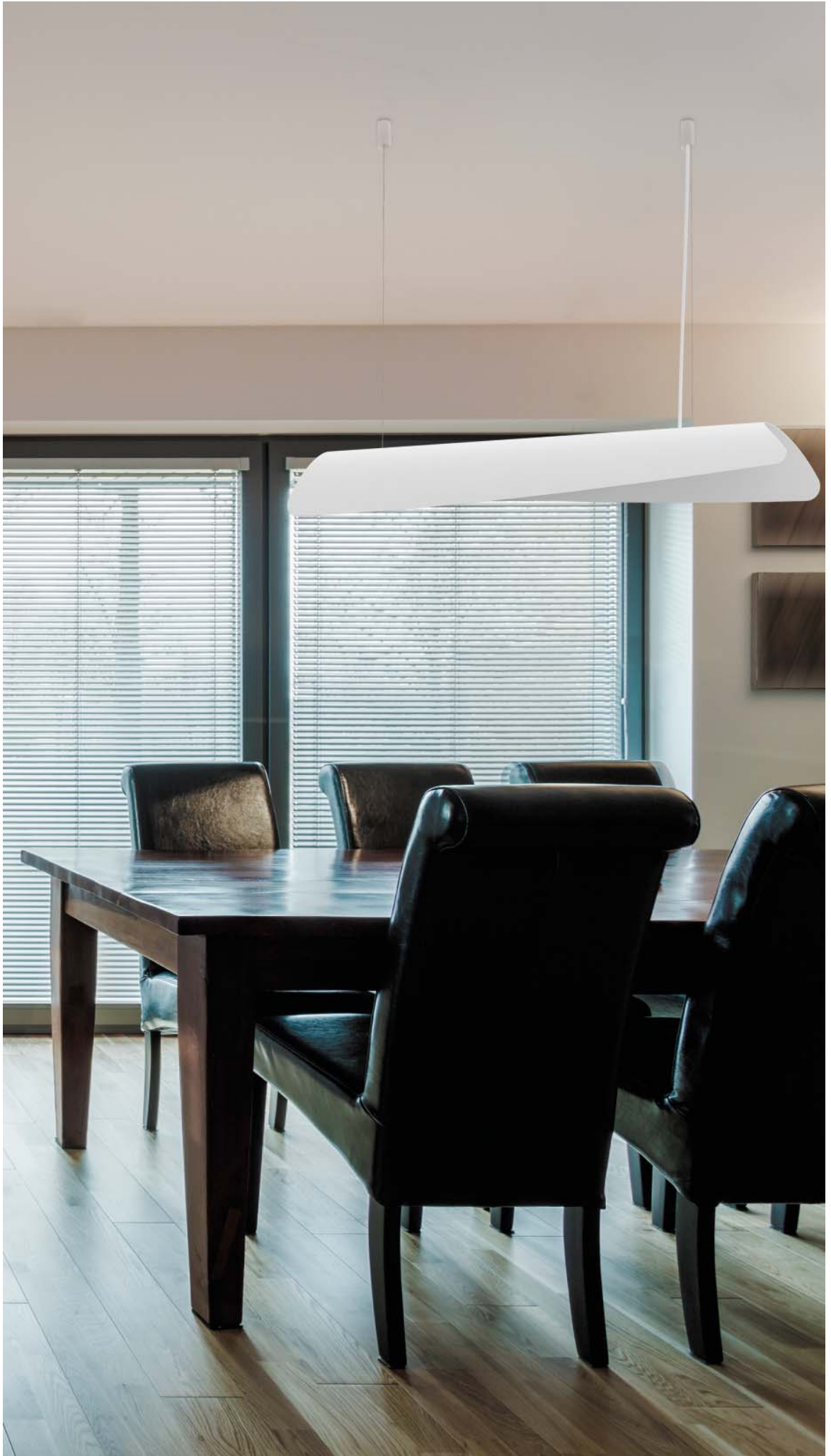


per muratura/for brickwork

023.448

pag. 52

Misure espresse in mm, tolleranza +/- 1-2 mm. L'azienda si riserva la facoltà di apportare variazioni di dati caratteristici, materiali, design, stili, tonalità, senza alcun preavviso. Measures in mm, tolerance +/- 1/2 mm. The company reserves the right to carry out variations to technical details, materials, design, style, colors with no previous notice. Die Masse sind in mm, mit einer Toleranz von +/- 1-2 mm ausgedrückt. Die Firma behält sich das Recht vor ohne Voranmeldung Änderungen an den Werkstoffen, am Design, am Stil und an der Färbung vorzunehmen.



**CRISTALY**

made in Italy



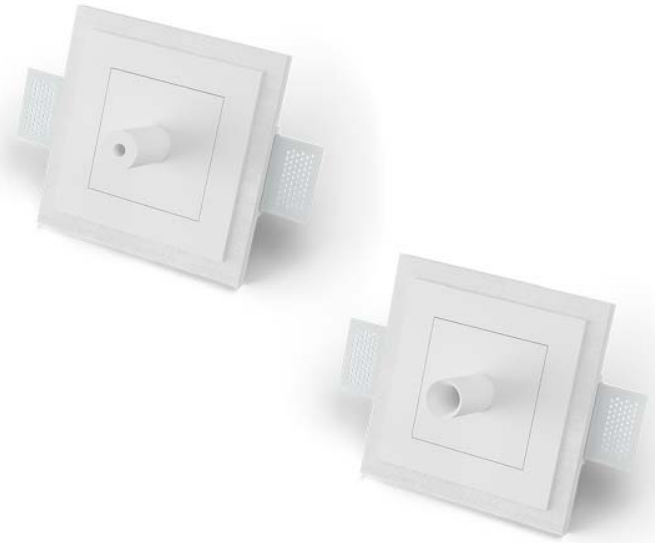
	5505D		5505E
	45		45
	185 x 185		185 x 185
	180 x 180		180 x 180
	Ø30		Ø30
	25		25
	60		60
	1.1 Kg		1.1 Kg

# 5505D - 5505E

Accessorio per sospensioni

Accessory for suspension lamps

Zubehör für Pendelleuchten



IP20

**ARTICOLO**

ARTICLE - ARTIKEL

Codice Code Code	Prezzo Price Preis
5505D004.00.CT	€ 75,00
5505E004.00.CT	€ 75,00

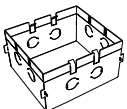


5505D



5505E

Accessori - Accessories - Zubehörteile



per muratura/for brickwork

023.448

pag. 52

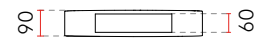
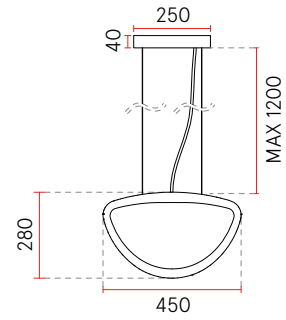
Misure espresse in mm, tolleranza +/- 1-2 mm. L'azienda si riserva la facoltà di apportare variazioni di dati caratteristici, materiali, design, stili, tonalità, senza alcun preavviso.  
 Measures in mm, tolerance +/- 1/2 mm. The company reserves the right to carry out variations to technical details, materials, design, style, colors with no previous notice.  
 Die Masse sind in mm, mit einer Toleranz von +/- 1-2 mm ausgedrückt. Die Firma behält sich das Recht vor ohne Voranmeldung Änderungen an den Werkstoffen, am Design, am Stil und an der Färbung vorzunehmen.

# 5506

design by Itamar Harari

made in Italy

CRISTALY



## ARTICOLO

ARTICLE - ARTIKEL

Codice Code Code	Parte elettrica Electrical part Leuchtmittel	Potenza Power Leistung	Flusso luminoso Light output Lumen	Temp. colore Color temp. Farbtemp.	CRI CRI CRI	Tensione Tension Spannung	Frequenza Frequency Frequenz	Prezzo Price Preis
5506.004.L93.CT	LED	2x6.5W	1800lm	3000°K	85	220-240V	50/60Hz	€ 285,00

Rosone in CRISTALY incluso nella confezione  
CRISTALY Ceiling Rose included in the packaging  
CRISTALY Deckenrosette in der Verpackung inbegriffen

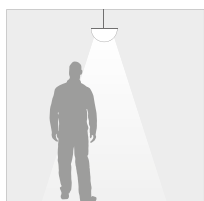
## Accessori - Accessories - Zubehörteile



020.314  
Cavi colorati - Colored cables - Farbige Kabel  
pag. 52



5505  
pag. 52



5505B  
pag. 35



5505C  
pag. 35



5505D  
pag. 37



5505E  
pag. 37





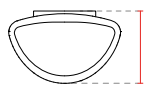


CRISTALY

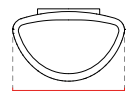
made in Italy

8955

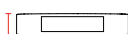
design by Itamar Harari



295



450



90



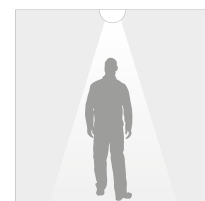
3.7 Kg

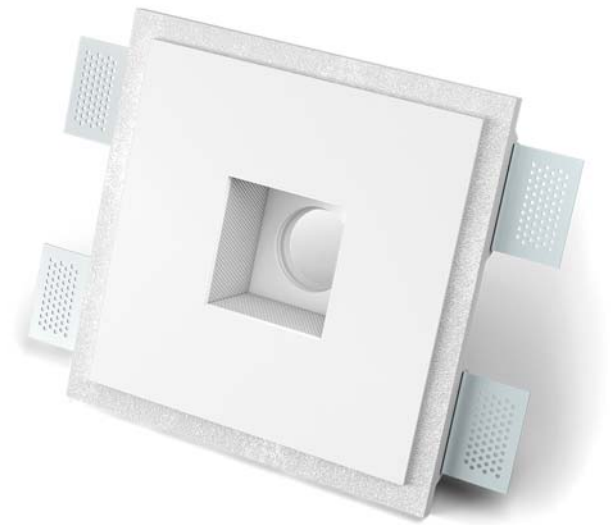



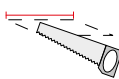
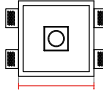
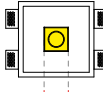



ARTICOLO

ARTICLE - ARTIKEL

Codice Code Code	Parte elettrica Electrical part Leuchtmittel	Potenza Power Leistung	Flusso luminoso Light output Lumen	Temp. colore Color temp. Farbtemp.	CRI CRI CRI	Tensione Tension Spannung	Frequenza Frequency Frequenz	Prezzo Price Preis
8955.004.L93.CT	LED	2x6.5W	1800lm	3000°K	85	220-240V	50/60Hz	€ 245,00





	125
	245 x 245
	240 x 240
	77 x 77
	70
	120
	2.2 Kg

IP20   

## ARTICOLO

ARTICLE - ARTIKEL

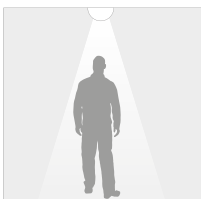
Codice Code Code	Parte elettrica Electrical part Leuchtmittel	Potenza Power Leistung	Tensione Tension Spannung	Frequenza Frequency Frequenz	Prezzo Price Preis
M005.004.35.CT	GU10 ø50	MAX 35W	240V	50/60Hz	€ 470,00

## CASSE ACUSTICHE INCLUSE

LOUDSPEAKERS INCLUDED - INCLUSIVE LAUTSPRECHER

Potenza nominale Nominal power Nennleistung	Potenza di picco Peak power Leistungsspitze	Sensibilità Audio sensitivity Audioempfindlichkeit	Risposta in frequenza Frequency response Frequenzbereich	N° Driver N° Driver N° Driver	Impedenza Impedance Impedanz	Cross Over Hi Pass Hi Pass Crossover Hochpass-Crossover-Einheit
40 Wrms	80 Wmax	85 dB/oct	200-20000 Hz	2	8 Ohm	200 Hz 1° ordine

## Accessori - Accessories - Zubehörteile



Subwoofer - pag. 52  
M900A  
M900B  
M900C



L001/L004  
L002/L005  
pag. 52

CRISTALY

made in Italy

M006



	170
	255 x 255
	250 x 250
	150 x 150
	110
	G53=165* LED=165
	2.45 Kg



F CE III IP20

\* = Altezza incluso lampadina OSRAM H55 mm e portalampada  
Height including OSRAM H55 mm lamp and lampholder  
Höhe inkl. OSRAM H55 mm Lampe und Fassung

ARTICOLO

ARTICLE - ARTIKEL

Codice Code Code	Parte elettrica Electrical part Leuchtmittel	Potenza Power Leistung	Corrente Current Strom	Tensione Tension Spannung	Flusso luminoso Light output Lumen	Temp. colore Color temp. Farbtemp.	CRI CRI CRI	Prezzo Price Preis
M006.004.92.CT	G53 (QR111)	MAX 20W	/	12V	/	/	/	€ 383,00
M006.004.L47.CT	LED	13W	350mA	/	1600lm	3000°K	85	€ 470,00

ALIMENTATORI

POWER SUPPLIES - BETRIEBSGERÄTE

Per articolo For article Für Artikel	Codice Code Code	Potenza Power Leistung	Faretti collegabili Spotlight connections Anschliessbare Strahler	Prezzo Price Preis
M006.004.L47.CT	026.171	18.9W	1	€ 36,00
	026.174	40W	2-3	€ 77,50

CASSE ACUSTICHE INCLUSE

LOUDSPEAKERS INCLUDED - INCLUSIVE LAUTSPRECHER

Potenza nominale Nominal power Nennleistung	Potenza di picco Peak power Leistungsspitze	Sensibilità Audio sensitivity Audioempfindlichkeit	Risposta in frequenza Frequency response Frequenzbereich	N° Driver N° Driver N° Driver	Impedenza Impedance Impedanz	Cross Over Hi Pass Hi Pass Crossover Hochpass-Crossover-Einheit
40 Wrms	80 Wmax	85 dB/oct	200-20000 Hz	2	8 Ohm	200 Hz 1° ordine

Accessori - Accessories - Zubehörteile



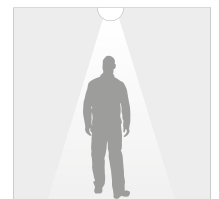
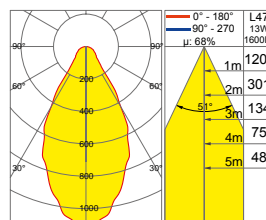
DIMMER  
pag. 53



L003/L006  
pag. 52

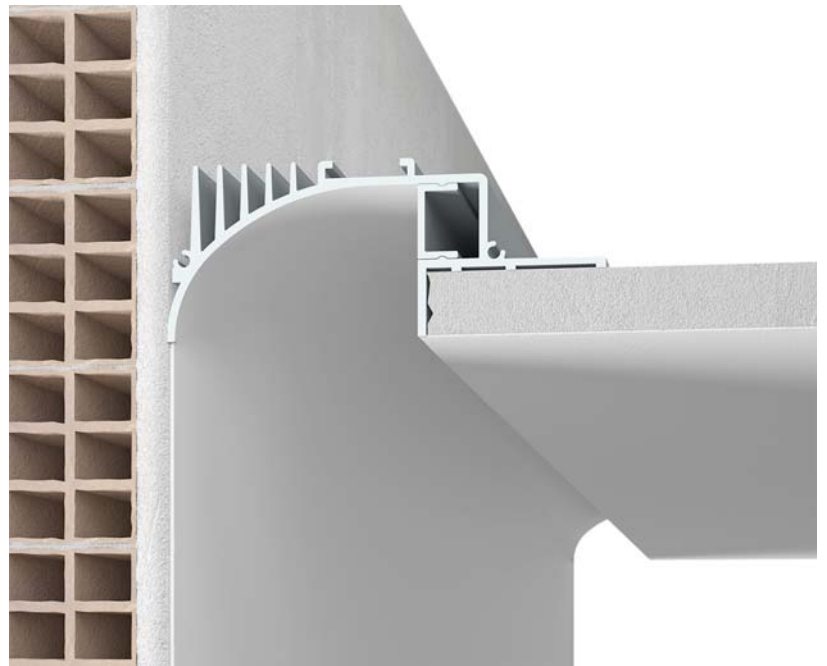
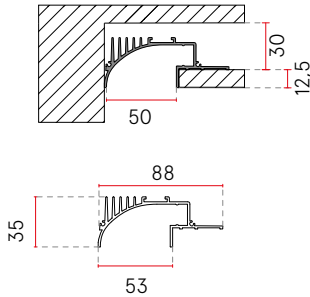


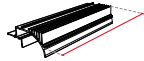
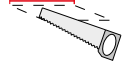

Subwoofer - pag. 52  
M900A  
M900B  
M900C

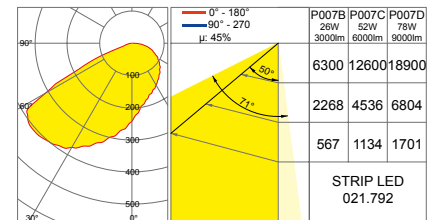


Misure espresse in mm, tolleranza +/- 1-2 mm. L'azienda si riserva la facoltà di apportare variazioni di dati caratteristici, materiali, design, stili, tonalità, senza alcun preavviso.  
Measures in mm, tolerance +/- 1/2 mm. The company reserves the right to carry out variations to technical details, materials, design, style, colors with no previous notice.  
Die Masse sind in mm, mit einer Toleranz von +/- 1-2 mm ausgedrückt. Die Firma behält sich das Recht vor ohne Voranmeldung Änderungen an den Werkstoffen, am Design, am Stil und an der Färbung vorzunehmen.





Codice Code Code				Prezzo Price Preis
P007B006.00.CT	1000	53 x 1005	1.1 Kg	€ 91,00
P007C006.00.CT	2000	53 x 2005	2.2 Kg	€ 180,00
P007D006.00.CT	3000	53 x 3005	3.3 Kg	€ 270,00



LED = MAX 30W/m

Nella Confezione di ogni singolo profilo viene fornito:

- Corpo in ALUMITE verniciato ral 9010 opaco ;
- Schermo in metacrilato opalino goffrato;

In the packaging of each profile it is included:

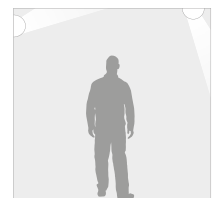
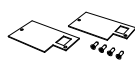
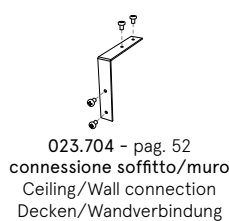
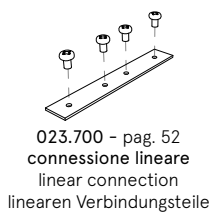
- ALUMITE profile painted ral 9010 matt;
- Screen in opal methacrylate;

In der Verpackung der einzelnen Profile ist einbegriffen:

- ALUMITE Profil Lackiert Ral 9010 Matt;
- Abdeckung in Opal-Methacrylat;

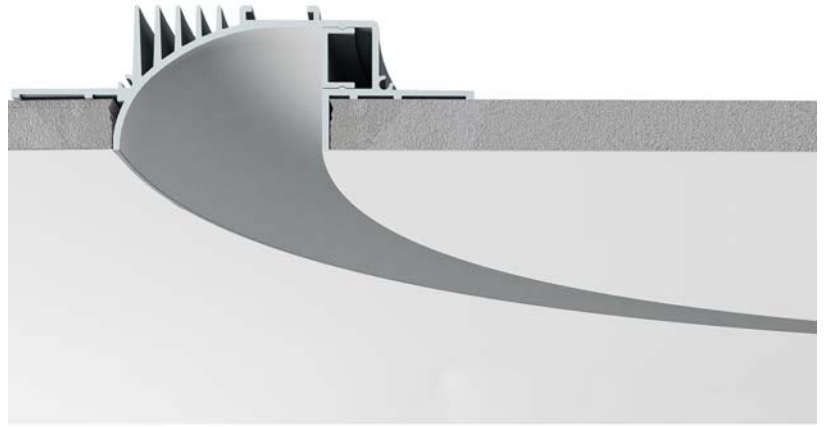
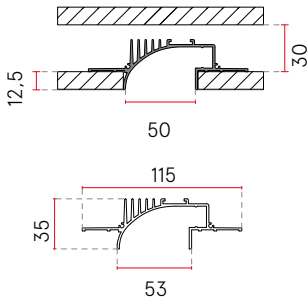
Accessori - Accessories - Zubehörteile

Elementi facoltativi da ordinare separatamente:  
Optional items to be ordered separately:  
Optionale Artikel müssen separat bestellt werden:



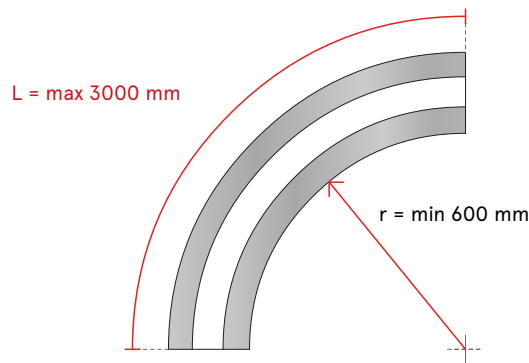
Misure espresse in mm, tolleranza +/- 1-2 mm. L'azienda si riserva la facoltà di apportare variazioni di dati caratteristici, materiali, design, stili, tonalità, senza alcun preavviso.  
Measures in mm, tolerance +/- 1/2 mm. The company reserves the right to carry out variations to technical details, materials, design, style, colors with no previous notice.  
Die Masse sind in mm, mit einer Toleranz von +/- 1-2 mm ausgedrückt. Die Firma behält sich das Recht vor ohne Voranmeldung Änderungen an den Werkstoffen, am Design, am Stil und an der Färbung vorzunehmen.





IP20

Codice Code Code	Descrizine Description Beschreibung	Prezzo Price Preis
P008	Raggi e lunghezze su richiesta a progetto -Raggio minimo 600 mm -Sviluppo massimo da curvato 3000 mm Bespoke radius and length on request - Minimum radius 600mm - Maximum length of curved profile 3000mm Maßgeschneiderte Radiuse und Längen auf Anfrage - Mindestradius 600mm -Mindestlänge des gebogenen Profils 3000mm	on demand



LED = MAX 30W/m

Nella Confezione di ogni singolo profilo viene fornito:

- Corpo in ALUMITE verniciato ral 9010 opaco ;
- Schermo in metacrilato opalino goffrato;

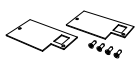
In the packaging of each profile it is included:

- ALUMITE profile painted ral 9010 matt;
- Screen in opal methacrylate;

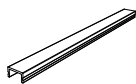
In der Verpackung der einzelnen Profile ist einbegriffen:

- ALUMITE Profil Lackiert Ral 9010 Matt;
- Abdeckung in Opal-Methacrylat;

## Accessori - Accessories - Zubehörteile



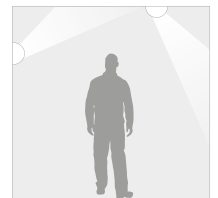
P005.KIT01 - pag. 52  
coppia testate di chiusura  
couple of end caps  
Paar Endkappen



029.010.300 - pag. 52  
Ricambio schermo opalino  
Opal plastic cover replacement part  
Abdeckung in Opalen-Kunststoff Ersatzteil



021.790-021.791-021.792  
Strip LED  
pag. 50





# INSTALLAZIONE SU LATERIZIO

INSTALLATION ON BRICKWORK  
ANWENDUNG AUF MAUERWERK

## P002-P003-P004

I nostri profili P002 - P003 - P004 possono essere installati sia su muratura in laterizio sia su cemento con le normali attrezzature presenti in cantiere e non necessitano di controcassa.

---

Our profiles P002 - P003 - P004 can be installed into brickwork and concrete wall or ceiling with standard tools present in the building sites and do not need the housing box.

---

Unsere Profile P002 - P003 - P004 können auf Mauerwerk oder auf Betonwand mit den Standardwerkzeugen einer Baustelle montiert werden; Einbaugehäuse werden nicht benötigt.



1

PREPARARE LA SCANALATURA

Arrange wall chases

Mauerschlitze ausführen



2

FISSARE CON LE VITI

Fix with screws

Mit Schrauben befestigen



3

INTONACARE

Plaster

Verputzen



4

RIMUOVERE LO SCHERMO PROTETTIVO  
SOLO A FINE TINTEGGIATURA

Remove protective screen only after the  
final painting

Schutz-Abdeckung nur nach der  
Wandlackierung entfernen

# 021.790 - 021.791 - 021.792

IP20



CE



2700°K  
4000°K  
ON DEMAND

C.V.  
[V]



## ARTICOLO

ARTICLE - ARTIKEL

Codice Code Code	Parte Elettrica Electrical part Leuchtmittel	Potenza Power Leistung	Fl.Luminoso Light output Lumen	Rendimento Efficiency Lichteffizienz	CRI CRI CRI	Tensione Tension Spannung	LED/m LED/m LED/m	Temp.colore Color temp. Farbtemp	Selezione Selection Selektion	Tagliabile ogni Cutttable Trennbar
021.790	LED 2835	15W/m	1400lm/m	90lm/W	85	24Vdc	120	3000°K	3 step MacAdam +/- 70°K	5cm
021.791	LED 2835	18W/m	2000lm/m	115lm/W	85	24Vdc	224	3000°K	3 step MacAdam +/- 70°K	3.1cm
021.792	LED 2835	26W/m	3000lm/m	115lm/W	85	24Vdc	224	3000°K	3 step MacAdam +/- 70°K	3.1cm

**NEW!**

3000 lm/m  
115 lm/W  
26W/m

## STRIP LED

Codice Code Code	Potenza Power Leistung	Lunghezza Length Länge	Prezzo Price Preis
021.790.050	7.5W	500 mm	€ 15,00
021.790.100	15W	1000 mm	€ 30,00
021.790.150	22.5W	1500 mm	€ 45,00
021.790.200	30W	2000 mm	€ 60,00
021.790.300	45W	3000 mm	€ 90,00
021.790.500	75W	5000 mm	€ 140,00
021.791.050	9W	500 mm	€ 21,00
021.791.100	18W	1000 mm	€ 42,00
021.791.150	27W	1500 mm	€ 63,00
021.791.200	36W	2000 mm	€ 84,00
021.791.300	54W	3000 mm	€ 126,00
021.791.500	90W	5000 mm	€ 200,00
021.792.050	13W	500 mm	€ 23,00
021.792.100	26W	1000 mm	€ 45,00
021.792.150	39W	1500 mm	€ 68,00
021.792.200	52W	2000 mm	€ 90,00
021.792.300	78W	3000 mm	€ 135,00
021.792.500	130W	5000 mm	€ 220,00

## STRIP LED 9010novantadiecì 2016

Per la linea PROFILI 9010novantadiecì propone tre modelli di strip LED:

021.790 da 15W/m  
021.791 da 18W/m  
021.792 da 26W/m

Le principali caratteristiche che le distinguono dalle comuni strip led in commercio sono l'uniformità nella selezione della tonalità colore, il CRI elevato e l'ottimo rendimento (lm/m).

9010novantadiecì offers three models of LED strips for the PROFILI collection:

021.790 da 15W/m  
021.791 da 18W/m  
021.792 da 26W/m

The main distinctive characteristics from the common strip led in the market are: uniformity in the selection of the color shades, high CRI and energy efficient (lm / m).

9010novantadiecì wird mit drei verschiedenen LED-Leisten für die PROFIL-Baureihe angeboten.

021.790 da 15W/m  
021.791 da 18W/m  
021.792 da 26W/m

Die wichtigsten Merkmale, die sie von den herkömmlichen, im Handel erhältlichen LED-Leisten unterscheiden, sind die Gleichförmigkeit bei der Lichtfarbenwahl, der ausgezeichnete Farbwiedergabeindex (CRI) und die hohe Lichtausbeute (lm/m).

### ALIMENTATORI POWER SUPPLIES BETRIEBSGERÄTE

### ALIMENTATORI DIMMERABILI DIMMER REGULATED POWER SUPPLIES DIMMBARE BETRIEBSGERÄTE



Codice - Code - Code	026.155	026.175	026.153	026.188	026.189	026.219	026.209	026.190+ 026.188	026.190+ 026.189		
Prezzo - Price - Preis	€ 36,00	€ 49,00	€ 55,00	€ 209,50	€ 259,50	€ 80,00	€ 93,50	€ 104,50 + € 209,50	€ 104,50 + € 259,50		
Potenza - Power - Leistung	19,2 W	36 W	60 W	120 W	240 W	21,6 W	60 W	120 W	240 W		
Tensione - Tension - Spannung	24V	24V	24V	24V	24V	24V	24V	24V	24V		
STRIP LED											
Codice Code Code	Potenza Power Leistung	Lunghezza Length Länge									
021.790.050	7.5W	500 mm	1 - 2	1 - 4	1 - 7	8 - 15	16 - 31	1 - 2	1 - 7	8 - 15	16 - 31
021.790.100	15W	1000 mm	1	1 - 2	1 - 3	4 - 7	8 - 15	1	1 - 3	4 - 7	8 - 15
021.790.150	22.5W	1500 mm		1	1 - 2	3 - 5	6 - 10		1 - 2	3 - 5	6 - 10
021.790.200	30W	2000 mm		1	1	2 - 3	4 - 7		1	2 - 3	4 - 7
021.790.300	45W	3000 mm			1	2	3 - 5		1	2	3 - 5
021.790.500	75W	5000 mm				1	2 - 3			1	2 - 3
021.791.050	9W	500 mm	1 - 2	1 - 3	1 - 6	7 - 13	14 - 26	1 - 2	1 - 6	7 - 13	14 - 26
021.791.100	18W	1000 mm	1	1	1 - 3	4 - 6	7 - 13	1	1 - 3	4 - 6	7 - 13
021.791.150	27W	1500 mm		1	1 - 2	3 - 4	5 - 8		1 - 2	3 - 4	5 - 8
021.791.200	36W	2000 mm			1	2 - 3	4 - 6		1	2 - 3	4 - 6
021.791.300	54W	3000 mm			1	2	3 - 4		1	2	3 - 4
021.791.500	90W	5000 mm				1	2			1	2
021.792.050	13W	500 mm	1	1 - 2	1 - 4	5 - 9	10 - 18	1	1 - 4	5 - 9	10 - 18
021.792.100	26W	1000 mm		1	1 - 2	3 - 4	5 - 9		1 - 2	3 - 4	5 - 9
021.792.150	39W	1500 mm			1	2 - 3	4 - 6		1	2 - 3	4 - 6
021.792.200	52W	2000 mm			1	2	3 - 4		1	2	3 - 4
021.792.300	78W	3000 mm				1	2 - 3			1	2 - 3
021.792.500	130W	5000 mm					1				1

# Accessori - Accessories - Zubehörteile

## CONTROCASSE - HOUSING BOX - EINBAUGEHÄUSE

Codice Code Code	Misura Measure Abmessungen	Misura foro Hole size Ausschnitt Abmessung	Articoli Article Artikel	Prezzo Price Preis
023.447	200 x 200 x 120	230 x 230 x 130	4044B	€ 28,00
023.448	190 x 190 x 125	220 x 220 x 135	5505B - 5505C - 5505D - 5505E	€ 26,00
023.452	140 x 200 x 55	170 x 230 x 65	4155B	€ 21,00
023.475	265 x 265 x 150	295 x 295 x 160	4039B - 4040B	€ 39,00
023.476	355 x 305 x 50	385 x 335 x 60	2369A - 2371A	€ 36,00
023.477	255 x 255 x 170	285 x 285 x 180	4045B	€ 48,00
023.478	140 x 140 x 75	170 x 170 x 85	4154B	€ 26,00
023.486	470 x 170 x 85	500 x 200 x 95	2414B	€ 36,00
023.487	465 x 255 x 85	495 x 285 x 95	2415B	€ 41,00
023.488	410 x 340 x 85	440 x 370 x 95	2416A	€ 43,00
023.490	320 x 320 x 85	350 x 350 x 95	2402E - 2402F - 2402G	€ 36,00

## ACCESSORI PROFILI E SOSPENSIONI - ACCESSORIES FOR PROFILES AND SUSPENSION LAMPS - ZUBEHÖR FÜR PROFILE UND PENDEL

Codice Code Code	Descrizione Description Beschreibung	Misura Measure Abmessungen	Prezzo Price Preis
020.314B	Cavo bianco - White cable - Weißes Kabel	1200	€ 12,00
020.314G	Cavo giallo - Yellow cable - Gelbes Kabel	1200	€ 12,00
020.314N	Cavo nero - Black cable - Schwarzes Kabel	1200	€ 12,00
020.314R	Cavo rosso - Red cable - Rotes Kabel	1200	€ 12,00
020.314V	Cavo verde - Green cable - Grünes Kabel	1200	€ 12,00
5505.004.00.CT	Rosone ad incasso - Recessed Ceiling Rose - Einbau-Deckenrosette	/	€ 78,00
P005.KIT01	Coppia testate di chiusura - Couple of end caps - Paar Endkappen	/	€ 10,00
029.010.300	Ricambio schermo opalino - Opal plastic cover replacement part - Abdeckung in Opalen-Kunststoff Ersatzteil	3000	€ 37,00
023.700	Connessione lineare - Linear connection - Linearen Verbindungsteile	101 x 16	€ 7,00
023.701	Connessione a L - L connection - L Verbindungsteile	66 x 66	€ 9,00
023.704	Connessione soffitto/muro - Ceiling/Wall connection - Decken/Wandverbindung	82 x 82	€ 9,00

## SUBWOOFER

Codice Code Code	Descrizione Description Beschreibung	Prezzo Price Preis
M900A004.00.CT	Ingresso audio da amplificatore esterno - Frequency audio from external amplifier - Frequenz Audio von externen Verstärkern	€ 784,00
M900B004.00.CT	Ingresso audio da switch di rete LAN - Audio input from LAN network switch - Audio-Eingang von LAN Netzwerk-Switch	€ 1.028,00
M900C004.00.CT	Ingresso audio da Bluetooth - Audio input from Bluetooth - Audiosignale von Bluetooth	€ 1.158,00

## LAMPADINE LED - LED LAMPS - LED LEUCHTMITTEL

Codice Code Code	Descrizione Description Beschreibung	Prezzo Price Preis
L001.L71.CT	LED 8W 220-240V 50/60 Hz 650lm 3000°K CRI 85 Beam angle 60° Ø50	€ 43,00
L001.L71D.CT	LED 8W 700 mA 650lm 3000°K CRI 85 Beam angle 60° Ø50 - without power supply	€ 28,00
L002.L72.CT	LED 12W 220-240V 50/60 Hz 1000lm 3000°K CRI 85 Beam angle 60° Ø50	€ 58,00
L002.L72D.CT	LED 12W 350 mA 1000lm 3000°K CRI 85 Beam angle 60° Ø50 - without power supply	€ 36,00
L003.L73.CT	LED 15W 220-240V 50/60 Hz 1200lm 3000°K CRI 85 Beam angle 60° Ø111	€ 85,00
L003.L73D.CT	LED 15W 350mA 1200lm 3000°K CRI 85 Beam angle 60° Ø111 - without power supply	€ 60,00
L004.L71.CT	LED 8W 220-240V 50/60 Hz 650lm 3000°K CRI 85 Beam angle 30° Ø50	€ 48,00
L004.L71D.CT	LED 8W 700mA 650lm 3000°K CRI 85 Beam angle 30° Ø50 - without power supply	€ 28,00
L005.L72.CT	LED 12W 220-240V 50/60 Hz 1000 lm 3000°K CRI 85 Beam angle 30° Ø50	€ 63,00
L005.L72D.CT	LED 12W 350 mA 1000 lm 3000°K CRI 85 Beam angle 30° Ø50 - without power supply	€ 36,00
L006.L73.CT	LED 15W 220-240V 50/60 Hz 1200lm 3000°K CRI 85 Beam angle 30° Ø111	€ 90,00
L006.L73D.CT	LED 15W 350 mA 1200lm 3000°K CRI 85 Beam angle 30° Ø111 - without power supply	€ 60,00

Misure espresse in mm, tolleranza +/- 1-2 mm. L'azienda si riserva la facoltà di apportare variazioni di dati caratteristici, materiali, design, stili, tonalità, senza alcun preavviso.  
Measures in mm, tolerance +/- 1/2 mm. The company reserves the right to carry out variations to technical details, materials, design, style, colors with no previous notice.  
Die Maße sind in mm, mit einer Toleranz von +/- 1-2 mm ausgedrückt. Die Firma behält sich das Recht vor ohne Voranmeldung Änderungen an den Werkstoffen, am Design, am Stil und an der Färbung vorzunehmen.

# Dimmer

DIM  
PUSH

DIM  
DALI

ALIMENTATORI DIMMERABILI PUSH E DALI CORRENTE COSTANTE					
POWER SUPPLIES WITH DIMMER-REGULATING BUTTON AND DALI COSTANT CURRENT					
MITTELS TASTE UND DALI-SYSTEM DIMMBARE BETRIEBSGERÄTE KONSTANTSTROMVERSORGUNG					
Codice - Code - Code	026.219		026.184	026.185	026.206
Prezzo - Price - Preis	€ 80,00		€ 99,00	€ 129,50	€ 131,50
Potenza - Power - Leistung	9,2W	16,1W	16,8W	35W	59,8W
Corrente - Current - Strom	200 mA	350 mA	350 mA	350 mA	1050 mA
LED					
L46	7 W	200 mA	1000 lm	1	
L47	13 W	350 mA	1600 lm	1	1 - 2
L89	16,5 W	1050 mA	2200 lm		1 - 3
L91	16,5 W	1050 mA	2200 lm		1 - 3

DIM  
0-10V

ALIMENTATORI DIMMERABILI 0-10 V CORRENTE COSTANTE					
POWER SUPPLIES WITH DIMMER-REGULATING ANALOGUE COSTANT CURRENT					
MITTELS 0-10V ANALOGSIGNAL DIMMBARE BETRIEBSGERÄTE KONSTANTSTROMVERSORGUNG					
Codice - Code - Code	026.219		026.184	026.187	026.207
Prezzo - Price - Preis	€ 80,00		€ 99,00	€ 115,00	€ 118,00
Potenza - Power - Leistung	9,2W	16,1W	16,8W	35W	59,8W
Corrente - Current - Strom	200 mA	350 mA	350 mA	350 mA	1050 mA
LED					
L46	7 W	200 mA	1000 lm	1	
L47	13 W	350 mA	1600 lm	1	1 - 2
L89	16,5 W	1050 mA	2200 lm		1 - 3
L91	16,5 W	1050 mA	2200 lm		1 - 3

DIM  
PUSH

DIM  
0-10V

DIM  
DALI

ALIMENTATORI DIMMERABILI TENSIONE COSTANTE					
DIMMER-REGULATED POWER SUPPLIES CONSTANT VOLTAGE					
DIMMBARES BETRIEBSGERÄTE KONSTANTSPANNUNGSVERSORGUNG					
Codice - Code - Code	026.219		026.209		
Prezzo - Price - Preis	€ 80,00		€ 93,50		
Potenza - Power - Leistung			21,6 W	60 W	
Tensione - Tension - Spannung			24 V	24 V	
LED					
L22	1,1 W	100 lm	1 - 19		1 - 52
	2,2 W	200 lm	1 - 9		1 - 26

# Legenda - Legend - Legende



**Contatto di terra / Classe I**  
Earth connector block / Class I  
*Schutzklasse I / Schutzleiter*



**Doppio isolamento / Classe II**  
Double insulation / Class II  
*Schutzklasse II / Schutzisolierung*



**Bassa tensione / Classe III**  
Safety extra-low voltage / Class III  
*Schutzklasse III / Niedervolt*



**Montaggio su superfici normalmente infiammabili**  
Installation on normally flammable surfaces  
*Montage auf normal entflammbaren Oberflächen*



**Apparecchio conforme alle direttive della Comunità Europea**  
Appliance complying with E.E.C. regulation  
*Das Gerät entspricht der EU Norm*



**Articolo ad incasso**  
Recessed article  
*Einbauleuchte*



**Articolo non ad incasso**  
NOT recessed – wall/ceiling installation  
*nicht einbaufähige Leuchte – Wand/Decken Montage*



**Tipo di installazione**  
Installation point  
*Anwendung*



**Articolo con alette regolabili**  
Article equipped with adjustable metal wings  
*Leuchte mit einstellbaren Metallflügeln*



**Articolo con sistema di manutenzione EASY MOUNTING SYSTEM**  
Article equipped with EASY MOUNTING SYSTEM maintenance system  
*Leuchte mit EASY MOUNTING SYSTEM*



**Temperatura colore 2700° K - 4000° K su richiesta**  
Color Temperature 2700° K - 4000° K on demand  
*Farbtemperatur 2700° K - 4000° K auf Anfrage*



**Articolo che necessita di alimentatore in CORRENTE COSTANTE**  
Article with CONSTANT CURRENT power supply required  
*Leuchte, die ein KONSTANTSTROM Betriebsgerät erfordert*



**Articolo che necessita di alimentatore in TENSIONE COSTANTE**  
Article with CONSTANT TENSION power supply required  
*Leuchte, die ein KONSTANTSPANNUNGS Betriebsgerät erfordert*



**Alimentatore nel controsoffitto**  
Power Supply in the counterceiling  
*Betriebsgerät in der Zwischendecke*



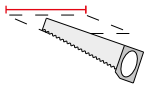
**Alimentatore in scatola remota**  
Power Supply in remote box  
*Betriebsgerät im Schaltkasten*



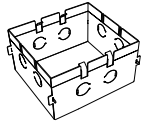
**Alimentatore incluso**  
Power Supply included  
*inklusive Betriebsgerät*



**Articolo tagliabile su misura**  
It can be cut to required size  
*Es kann auf die gewünschte Länge geschnitten werden*



**Foro incasso**  
Cardboard hole size  
*Einbaubohrung*



**Cassaforma per calcestruzzo/laterizio**  
Housing box for concrete/brickwork  
*Einbaugehäuse für Betonwand/ Mauer*



**Alimentatore dimmerabile**  
Dimmable power supply  
*Dimmbares Betriebsgerät*



## **CONTACTS**

Via Contessa, 23

36055 NOVE (VI) - ITALY

T. +39.0424.592258 - F. +39.0424.829990

Ufficio Vendite Italia: vendite@9010.it

Export Sales: export@9010.it

**[www.9010.it](http://www.9010.it)**

[www.9010.it](http://www.9010.it)